

In our **Service Center** you will find detailed **manuals** for all Magna Telemotive devices including the **System Client** and some optional features we are offering. If you do not have an account for the Service Center please contact TMO.productsupport@magna.com

1. Hook up the BLUEPIRAT2 5E

Step 1: Connect the **BLUEPIRAT2 5E** to the vehicle battery or a power supply via the power harness (red / Vbat / + / clamp30 and black / GND / - / clamp31).

Note: BLUEPIRAT2 5E has a separate power cable which is separated from the main cable set!

ATTENTION: If you have ordered an external antenna eg. for GPS, the connector has to be bolt only by hand, NOT with any tools!



Step 2: Connect the Ethernet port with the Ethernet port of your computer by using an Ethernet cable. **Note:** By default the device is configured as Automatic DHCP configuration for with IP address 192.168.0.233!



2. Power on/off the BLUEPIRAT2 5E

Step 3: Switch on the BLUEPIRAT2 5E by pressing the [ON / Trigger] button. The BLUEPIRAT2 - Logo changes into showing the available interfaces.



To switch off the BLUEPIRAT2 please press the [OFF / Esc] button for a few seconds.



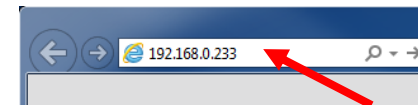
3. Connecting to the BLUEPIRAT2 5E

Step 4.a: By pressing the rotary button you will enter the operation menu. Here you can navigate through the menu on the front display by rotating and pressing the rotary button.

Please choose here the Menu [1] Info navigate to info screen 9/10 IP
The shown IP address will be needed in the next step.



Step 4.b: Open your Internet browser, enter the IP address 192.168.0.233 and confirm with [Enter].



Note:

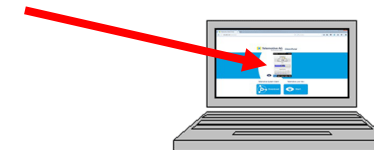
- Make sure your network settings will be set to “**apply IP address automatically**”
- The needed Java Runtime Environment is included into the client and has not to be installed separately.

The computer will established a connection to the device and your browser will show the Client portal.

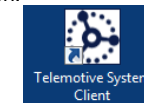
4. Installing the System Client

Step 5: Please click on the image to start the download of the client installer or the portable version from a direct link.

Choose [Save] to save the file to your local computer and start the installation by double clicking on the setup file. Follow the instructions, choose a destination directory and finalize the installation by pressing [Install].

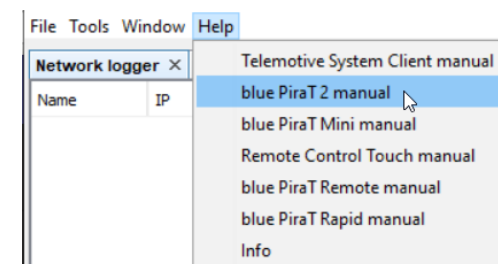


Step 6: After installing the **System Client** successfully, you will find the System Client icon on your desktop. Double-click the icon to start the application.



Step 6.b: If you have chosen the **portable version** of the System Client, you just have to unzip it to start.

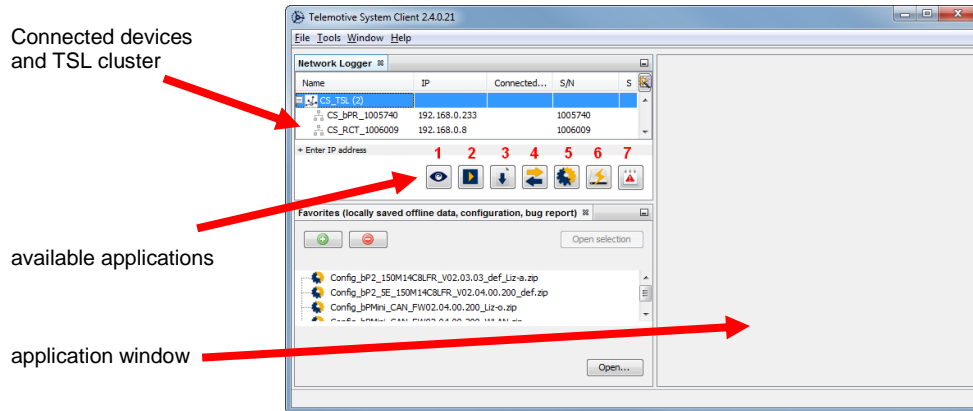
The menu item [Help] offers access to the links of the main manuals





5. Using the System Client

Step 7: In the **Network logger window** you will find the connected devices (with the IP address from step 4). By pressing one of the seven icons, you can open this application for the selected device or TSL cluster.



Available applications:

1. Live View
2. Online Monitor
3. Data download
4. Data conversion
5. Configuration menu
6. Firmware/License menu
7. Bug report menu

Contact

MAGNA Telemotive GmbH

Office München
Frankfurter Ring 115a
80807 München

Tel.: +49 89 357 186-0
Fax.: +49 89 357 186-520
E-Mail: TMO.info@magna.com
Web: <https://telemotive.magna.com>

Sales

Tel.: +49 89 357 186-550
Fax.: +49 89 357 186-520
E-Mail: TMO.Sales@magna.com

Support

Tel.: +49 89 357 186-518
E-Mail: TMO.productsupport@magna.com
ServiceCenter: <https://sc.telemotive.de/bluepirat>

BLUEPIRAT
BY MAGNA



BLUEPIRAT2 5E
Start Up Guide / 2020-09-01