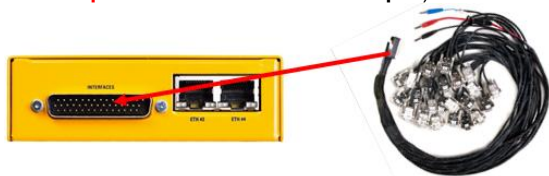


In our **Service Center** you will find detailed **manuals** for all Magna Telemotive devices including the **System Client** and some optional features we are offering.

If you do not have an account for the Service Center please contact TMO.productsupport@magna.com

1. Hook up the BLUEPIRAT Mini

Step 1: Connect the **BLUEPIRAT Mini** to the vehicle battery or a power supply via the power harness (**red / Vbat / + / clamp30** and **black / GND / - / clamp31**).



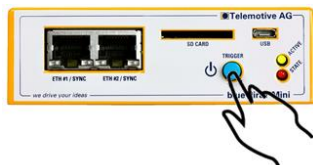
Step 2: Connect the Gigabit-Ethernet port **ETH #1** with the Ethernet port of your computer by using an Ethernet cable.

Note: By default, the device is configured as Automatic DHCP configuration for with IP address **192.168.0.233!**



2. Power on/off the BLUEPIRAT Mini

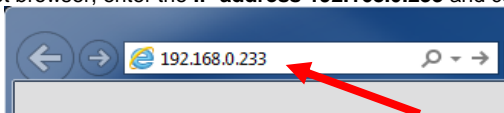
Step 3: Switch on the device by pressing the **[On / Trigger]** button and wait until the logger is ready.



For switching off the device please press the **[ON / Trigger]** button for about 5 seconds till the [Active] LED starts pulsing.

3. Connecting to the BLUEPIRAT Mini

Step 4: Open your Internet browser, enter the IP address **192.168.0.233** and confirm with [Enter].



Note:

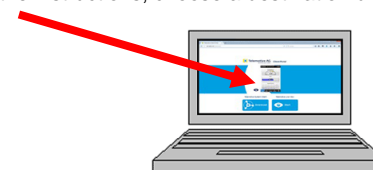
- Make sure your network settings will be set to **“apply IP address automatically”**
- The needed Java Runtime Environment is included into the client and has not to be installed separately.

The computer will established a connection to the device and your browser will show the Client portal.

4. Installing the System Client

Step 5: Please click on the image to start the download of the client installer or the portable version from a direct link.

Choose **[Save]** to save the file to your local computer and start the installation by double clicking on the setup file. Follow the instructions, choose a destination directory and finalize the installation by pressing **[Install]**.



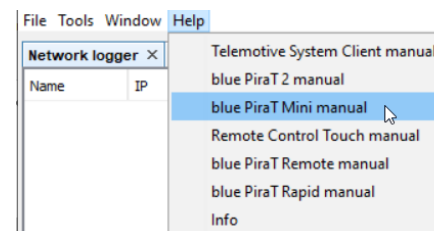
Step 6: After installing the **System Client** successfully, you will find the System Client icon on your desktop.

Double-click the icon to start the application.



Step 6.b: If you have chosen the **portable version** of the System Client, you just have to unzip it to start.

The menu item **[Help]** offers access to the links of the main manuals.



5. Using the System Client

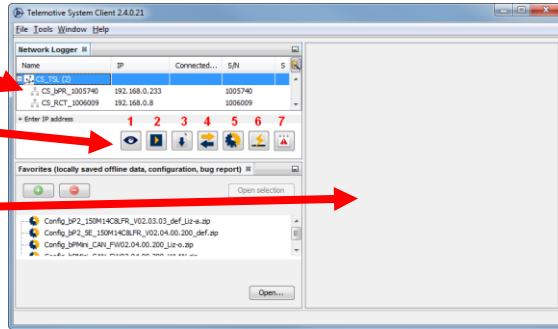
Step 7: In the **Network logger window** you will find the connected devices (with the IP address from step 4).

By pressing one of the seven icons, you can open this application for the selected **BLUEPIRAT Mini**.

connected devices
and TSL cluster

available applications

application window



Available applications:

1. Live View
2. Online Monitor
3. Data download
4. Data conversion
5. Configuration menu
6. Firmware/License menu
7. Bug report menu

Contact

MAGNA Telemotive GmbH

Office München
Frankfurter Ring 115a
80807 München

Tel.: +49 89 357 186-0
Fax.: +49 89 357 186-520
E-Mail: TMO.info@magna.com
Web: <https://telemotive.magna.com>

Sales

Tel.: +49 89 357 186-550
Fax.: +49 89 357 186-520
E-Mail: TMO.Sales@magna.com

Support

Tel.: +49 89 357 186-518
E-Mail: TMO.productsupport@magna.com
ServiceCenter: <https://sc.telemotive.de/bluepirat>



BLUEPIRAT
BY MAGNA



BLUEPIRAT Mini
Start Up Guide / 2020-09-01