

In our **Service Center** you will find detailed **manuals** for all Magna Telemotive devices including the **System Client** and some optional features we are offering. If you do not have an account for the Service Center please contact TMO.productsupport@magna.com

1. Hook up the BLUEPIRAT Rapid

Step 1: Connect the wiring harness to one of the two available sockets for the power supply on the BLUEPIRAT Rapid. Then connect power and ground (**red / Vbat / + / clamp30** and **black / GND / - / clamp31**) to the vehicle battery or a power supply.



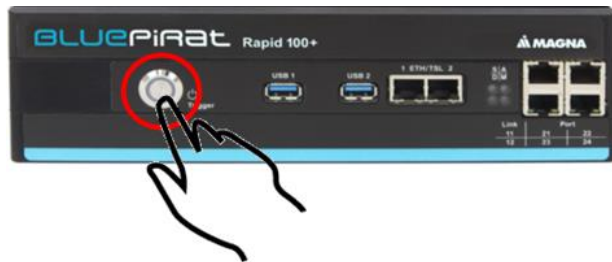
Step 2: Connect one of the two 10 Gigabit-Ethernet ports with the Ethernet port of your computer by using a Ethernet cable.

Note: By default, the device is configured as Automatic DHCP configuration for with IP address 192.168.0.233!



2. Power on/off the BLUEPIRAT Rapid

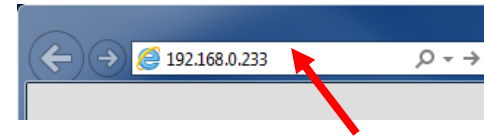
Step 3: Switch on the BLUEPIRAT Rapid by pressing the **[ON / Trigger]** button and wait until the logger is ready and the green LED is still on.



To switch off the BLUEPIRAT Rapid later, please press the **[ON / Trigger]** button for a few seconds, until the green LED starts pulsing.

3. Connecting to the BLUEPIRAT Rapid

Step 4: Open your Internet browser, enter the IP address **192.168.0.233** and confirm with [Enter].



Note:

- Make sure your network settings will be set to **“apply IP address automatically”**
- The needed Java Runtime Environment is included into the client and has not to be installed separately.

The computer will established a connection to the device and your browser will show the Client portal.

4. Installing the System Client

Step 5: Please click on the image to start the download of the client installer or the portable version from a direct link.

Choose **[Save]** to save the file to your local computer and start the installation by double clicking on the setup file. Follow the instructions, choose a destination directory and finalize the installation by pressing **[Install]**.

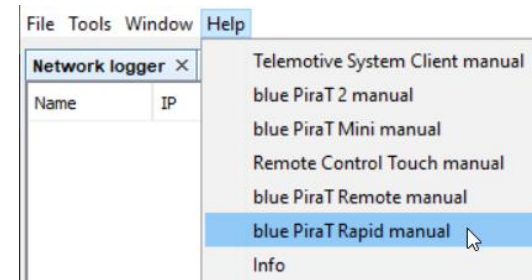


Step 6: After installing the **System Client** successfully, you will find the System Client icon on your desktop. Double-click the icon to start the application.



Step 6.b: If you have chosen the **portable version** of the System Client, you just have to unzip it to start.

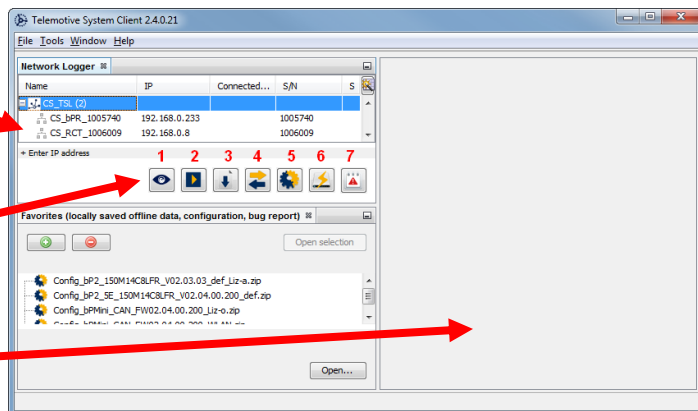
The menu item **[Help]** offers access to the links of the main manuals.



5. Using the System Client

Step 7: In the **Network logger window** you will find the connected devices (with the IP address from step 4). By pressing one of the seven icons, you can open this application for the selected device or TSL cluster.

Connected devices
and TSL cluster



available applications

application window

Available applications:

1. Live View
2. Online Monitor
3. Data download
4. Data conversion
5. Configuration menu
6. Firmware/License menu
7. Bug report menu

Contact

MAGNA Telemotive GmbH

Office München
Frankfurter Ring 115a
80807 München

Tel.: +49 89 357 186-0
Fax.: +49 89 357 186-520
E-Mail: TMO.info@magna.com
Web: <https://telemotive.magna.com>

Sales

Tel.: +49 89 357 186-550
Fax.: +49 89 357 186-520
E-Mail: TMO.Sales@magna.com

Support

Tel.: +49 89 357 186-518
E-Mail: TMO.productsupport@magna.com
ServiceCenter: <https://sc.telemotive.de/bluepirat>



BLUEPIRAT
BY MAGNA



BLUEPIRAT Rapid
Start Up Guide / 2020-09-01