






















BLUEPIRAT

BY MAGNA



BLUEPIRAT Series
Download Terminal User Guide / 21.07.2020
Version 3.4.3

Table of contents

1	LICENSE AGREEMENT	4
2	PRODUCT LIABILITY	5
3	Overview	6
4	System requirements	8
4.1	Further manuals.....	9
4.2	Additional features by optional licenses	10
4.3	Firmware Care	11
5	Starting Download Terminal 	12
5.1	Assigning devices to a group	14
5.1.1	Default.....	15
5.1.2	Identified by name	15
5.1.3	Identified by S/N	15
5.1.3.1	Adding a TSL-Cluster by using the button [Add device].....	16
5.1.3.2	Adding a TSL-Cluster by entering the serial number	18
5.1.4	Identified by IP	20
5.1.5	Terminal IP address	20
5.1.6	Activation & deactivation of groups.....	21
6	Available tasks         	22
6.1	Download data 	23
6.2	Converting data 	25
6.3	Set time 	27
6.4	Delete data 	28
6.5	Rest trigger counter 	28
6.6	Update configuration 	29
6.7	Update firmware 	29
6.8	Update licenses 	30
6.9	Download bugreport 	30
6.10	Task order.....	31
6.11	Saving the group.....	31
6.12	Administrating groups	31
6.13	Time schedule	32
7	Starting the Download Terminal	33
8	Abbreviations	38
9	List of figures	40
10	List of tables	42
11	Version history	43

12 Contact 44

1 LICENSE AGREEMENT

Please read the license agreement of this license contract carefully, before you install the software. By the installation of the software you agree to the conditions of this license contract.

This software-license agreement, in the following called "license", contains all rights and restrictions for final users that regulate the use of the accompanying software, operating instructions and other documents, in the following called as "software".

1. This license contract is an agreement between licensor and licensee, who is being licensed to use the named software.
2. Licensee acknowledges that this is only a limited nonexclusive license. This means, that the licensee has no right to allocate sublicenses. Licensor is and remains the owner of all titles, rights and interests in the software.
3. The software is a copyright property of the MAGNA Telemotive GmbH. The program or parts of it may not be further licensed to third parts, rented, sold or be further marketed in any form without explicit written approval by MAGNA Telemotive GmbH. The user may neither change the software and their components, nor modify, nor redevelop or decompile otherwise in any form.
4. This software is subject to no warranty. This software is sold as is, without any warranty. If at any time, a user changes his system, we hold no responsibility to change our software to make it work again.
5. This license permits licensee to install the software on more than one computer system, as long as the software will not be used on more than one computer system simultaneously. Licensee will not make copies of the software or allow copies of the software to be made by others, unless authorized by this license agreement. Licensee may make copies of the software for backup purposes only. Licensee is not entitled to transmit or to transfer the software or its rights from this license agreement.
6. Licensor is not liable to licensee for any damages, including compensatory, special, incidental, exemplary, punitive or consequential damages, connected with or resulting from this license agreement or licensee's use of this software.
7. Licensee agrees to defend and indemnify licensor and hold licensor harmless from all claims, losses, damages, complaints or expenses connected with or resulting from licensee's business operations.
8. Licensor has the right to terminate this license agreement and licensee's right to use this software upon any material breach by licensee. The duration of the license contract is indefinitely determined.
9. Licensee agrees to return all copies of the software to licensor or to destroy them upon termination of the license contract.
10. This license agreement replaces and supersedes all prior negotiations, dealings and agreements between licensor and licensee regarding this software.
11. This license contract is subject to German law.
12. If a regulation of this license contract is void by law, the validity of the remaining regulations is not affected. If there is such a regulation it will be replaced by a valid, according to the legal regulations and enforceable regulation with similar intention and similar economic consequence.
13. The license contract is effective by delivery of the software of the licensor to the licensee and/or by usage of the software by the licensee. This license contract is also valid without licensor's signature.
14. The license automatically goes out if the licensee does not agree to the license regulations described here or offend against the license regulations of this license contract. With ending the license contract the licensee is obliged to extinguish or to destroy the software and all copies of it no matter if installed or stored on disk or to hand all of it back to MAGNA Telemotive GmbH.
15. The licensee is liable for all damages caused to the licensor by the violation of these license regulations.

2 PRODUCT LIABILITY

The General Terms and Conditions of Sale and Delivery of MAGNA Telemotive GmbH can be found on our website (<https://telemotive.magna.com>) under imprint.

3 Overview

This user guide describes the feature of the license **Download Terminal** for the following data loggers of MAGNA Telemotive GmbH:

- BLUEPIRAT2
- BLUEPIRAT2 5E
- BLUEPIRAT Mini
- Remote Control Touch
- BLUEPIRAT Remote

The Download Terminal in the System Client allows the automatization of nearly all processes which had to be done by hand for every device before. By assigning devices to groups you can define, which steps had to be performed for which group of devices, when the client identifies a device.

The whole workflow, from updating the firmware or configuration up to download and conversion of the files can be defined and will be done for these devices later without any interaction of users.

This helps you to archive results of test drives automatically which saves time for instruction of your test drivers who only have to plug the device into your network.

This user guide describes the configuration and usage of this feature. The general configuration is described in the user guides of the used data logger as well as the System Client, which is valid together.

This document refers to **firmware version 03.04.03** and the **System Client** from **version 3.4.3**. Some features depending on model and feature license or may not be available in older versions.

Software updates and user guides for other, optional, licensed enhancements are available in our Service Center. (Please find the address under Contact at the last page.)

To ensure the most reliable operation of your system as possible, please make sure to use always current firmware and software versions.

Please note these important instructions about the handling of devices of MAGNA Telemotive GmbH!

There's a linux system running on the devices and sometimes when the device has a dirty shutdown due to a power break down or unplugging the power supply, the system is corrupt from this time. You know this situation from a PC, when you switch it off some times it maybe will not work any more or show you some mistakes.

In most cases this issue is caught up and repaired by the linux system we use, but sometimes it can happen that the system on the logger is damaged and there's no access to the device any more.

We are optimizing the handling of corrupted systems permanently and are integrating some new enhancements regarding this kind of issues with every new release to save the system. But we can't make the system for 100% save against these influences.

So please use always the provided mechanism for shutting down the device or the implemented standby function in which the device shutting down when no traffic is detected any more in an adjustable time.

[Index](#)

4 System requirements

Control Unit

A Windows based Laptop or PC is needed to configure the devices by **System Client**. It also allows to save the recorded data and to use them offline later.

System Client

The software client is used for configuring the data logger as well as downloading the recorded data or convert these into your needed file format. A firmware update can be performed by the **System Client** too to ensure that your devices are always up to date.

BLUEPIRAT2 / BLUEPIRAT2 5E / BLUEPIRAT Mini

The communication between bus systems and control units is monitored and relevant data can be recorded very precisely with the data logger. The collected data are stored to the logger and can be downloaded via Ethernet to a PC.

The **BLUEPIRAT2** is our top-class all-in-one data logger. Seven models cover a wide range of interfaces.

Additionally, the **BLUEPIRAT2 5E** offers improved power management and power backup, five integrated Ethernet ports and super-fast start-up behavior. The BLUEPIRAT2 can be expanded flexibly via [System Link](#).

The **BLUEPIRAT Mini** is smallest data logger in the world with an outstanding functional scope. It offers a wide range of interfaces, stable temperature behavior, very low energy consumption, four GBit Ethernet ports, and much more. Different BLUEPIRAT Mini can be expanded flexibly to one cluster and therefore handled very easily by using [System Link](#).

Remote Control Touch (optional)

Operate your BLUEPIRAT Mini or BLUEPIRAT2 data loggers safely and comfortably from the driver's or passenger seat. Via System Link our new remote control becomes part of your logger network. One remote control can handle all connected loggers.

BLUEPIRAT Remote (optional)

While Remote Control Touch is just a control unit for handling unique devices or a TSL network, the BLUEPIRAT Remote additional has logger functionality by offering internal storage and some interfaces.

License

For the additional feature **Download Terminal** an installed license is required. Settings for licensed features can be performed with a valid license only.

If you need a license for your logger, please contact our sales department (please find the address under contact at the last page).

4.1 Further manuals

Beside this user guide we offer the main manuals for our client as well as for the different data logger generations in our Service Center at <https://sc.telemotive.de/bluepirat>.

User manual for the System Client

https://sc.telemotive.de/4/uploads/media/TelemotiveSystemClient_UserManual.pdf

User manual for BLUEPIRAT2 / BLUEPIRAT2 5E

https://www.telemotive.de/4/uploads/media/blue_PiraT2_UserManual.pdf

User manual for BLUEPIRAT Mini

https://www.telemotive.de/4/uploads/media/blue_PiraT_Mini_UserManual.pdf

User manual for Remote Control Touch

https://sc.telemotive.de/4/uploads/media/RCTouch_UserGuide.pdf

User manual for BLUEPIRAT Remote

https://sc.telemotive.de/4/uploads/media/blue_PiraT_Remote_UserGuide.pdf

For having an easy access if necessary, the most important manuals are linked in the client under the menu item [Help] and are reachable easily from there.

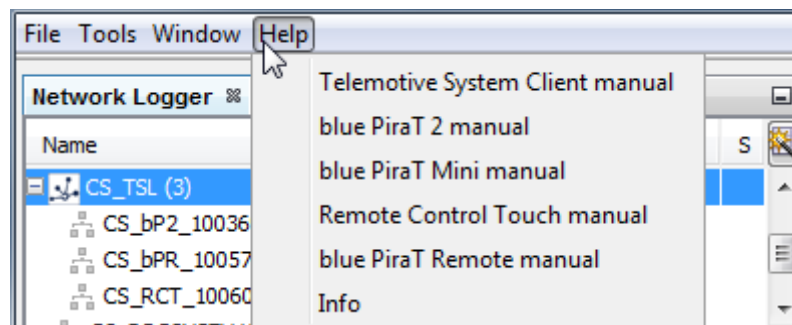


Figure 4.1: links to the manuals

Our licensed enhancements have own manuals which are stored in the Service Center too. You will find a list of these enhancements in the user manuals in the chapter **Additional features by optional licenses**.

4.2 Additional features by optional licenses

Additional features can be activated by purchasing and installing licenses. Licenses can be ordered at our sales team. You find the user guides for these additional features in our Service-Center. Currently the following licensed features are available.

Feature	Description
Camera Link	video recording via video server or network cameras
WLAN	supporting wireless LAN (802.11, 802.11a, 802.11n), (802.11ac from FW 02.04.01)
GPS logging	tracking of GPS data
Measurements with CCP	CAN Calibration Protocol
Measurements with XCP	Universal Measurement and Calibration Protocol Currently the functionality for Ethernet (XCP on Ethernet) and the CAN-bus (XCP on CAN) are available.
MOST150 Streaming	logging MOST150 synchronous/isochronous data
MLBevo	The license Connected-Gateway MLBevo enables the recording of data of the ATOP control unit MLBevo via USB to the Telemotive data logger and convert these data with the System Client. (from FW 02.03.01)
Download Terminal	Download Terminal allows an automatization of configured tasks for a defined group of devices. (from FW 02.03.01)
TPE	TPE = Telemotive Performance Extension Increasing the logging rate for Ethernet data up to 100Mbit/s (from FW 02.04.01)
Test automatisation	Interface for connecting to test automation tools. At the moment, the sending of CAN messages is supported. (from FW 02.04.01)
Cellular network	Allows the logger to send status messages over cellular network. (from FW 03.01.01)

Table 4.1: Additional features by optional licenses

4.3 Firmware Care

MAGNA Telemotive GmbH invests a great amount in the further development of its products.

For this we regularly provide new functions and enhancements via firmware and client releases.

Basic conditions

As part of the " Service Product Firmware Care ", new software and firmware versions are made available for download for a limited period of time. This service is available for 12 months from the date of purchasing the **BLUEPIRAT Rapid**. This period can be extended.

For details, please contact your sales partner (see contact at the end of the manual for addresses).

Affected products

- **BLUEPIRAT Mini**
- **BLUEPIRAT2 5E**
- **BLUEPIRAT2**
- **BLUEPIRAT Remote**
- **Remote Control Touch**
- **BLUEPIRAT Rapid**

Note:

Enhancements are only possible in current firmware releases.

Attention:

Please note that updates to main firmware versions (04.00.01 / 05.00.01) need a special update license and can't be flashed to a device without this license.

To buy these licenses please contact our sales department under TMO.Sales@magna.com (please find the complete address under Contact on the last page).

5 Starting Download Terminal

Please choose [Tools] => [Download Terminal] to change into **Download Terminal**.

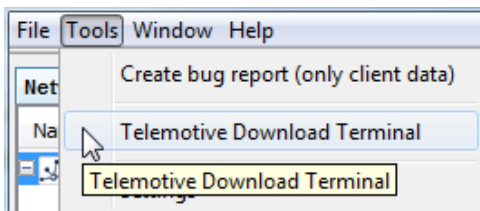


Figure 5.1: Starting Download Terminal

If there are some tabs open in the client you will get a message to close this tabs

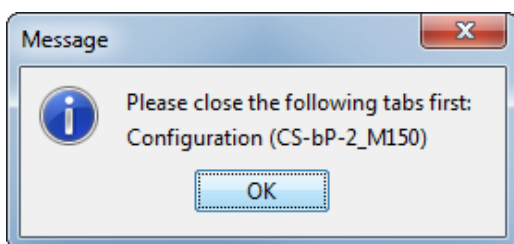


Figure 5.2: Message if tabs are open

The client window changes into **Download Terminal**,

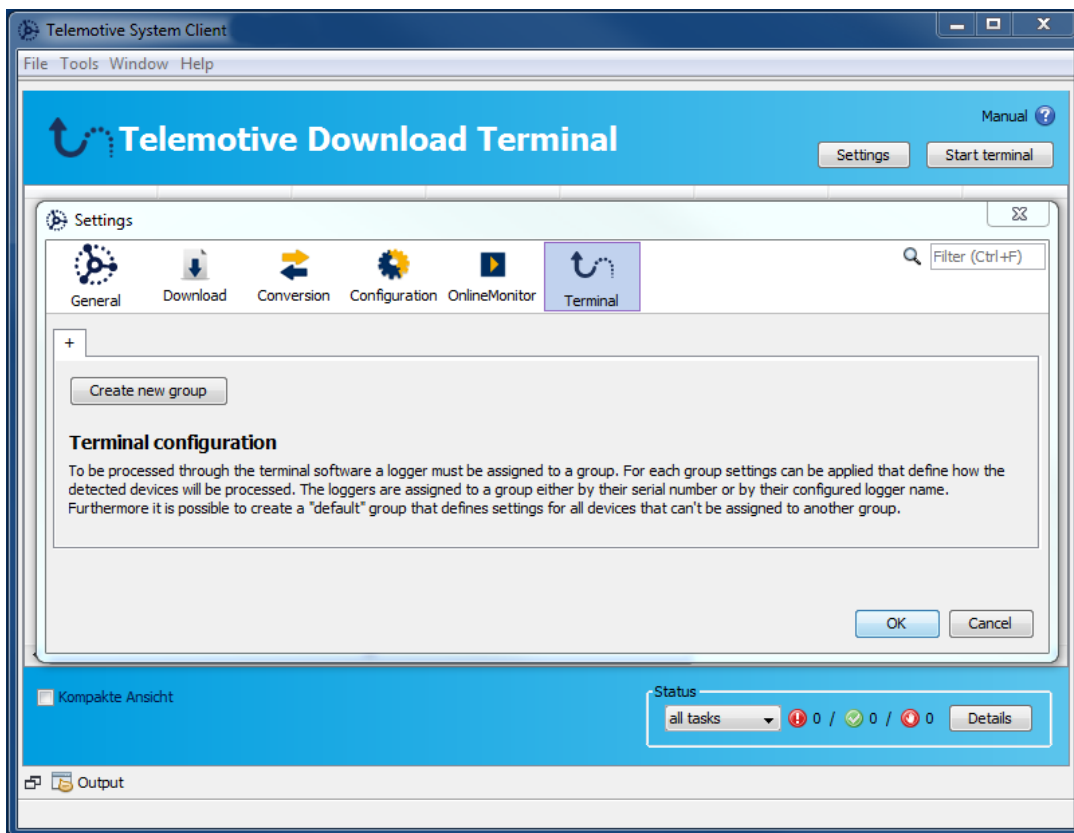


Figure 5.3: Starting Download Terminal

and opens automatically the settings window when it starts the first time.

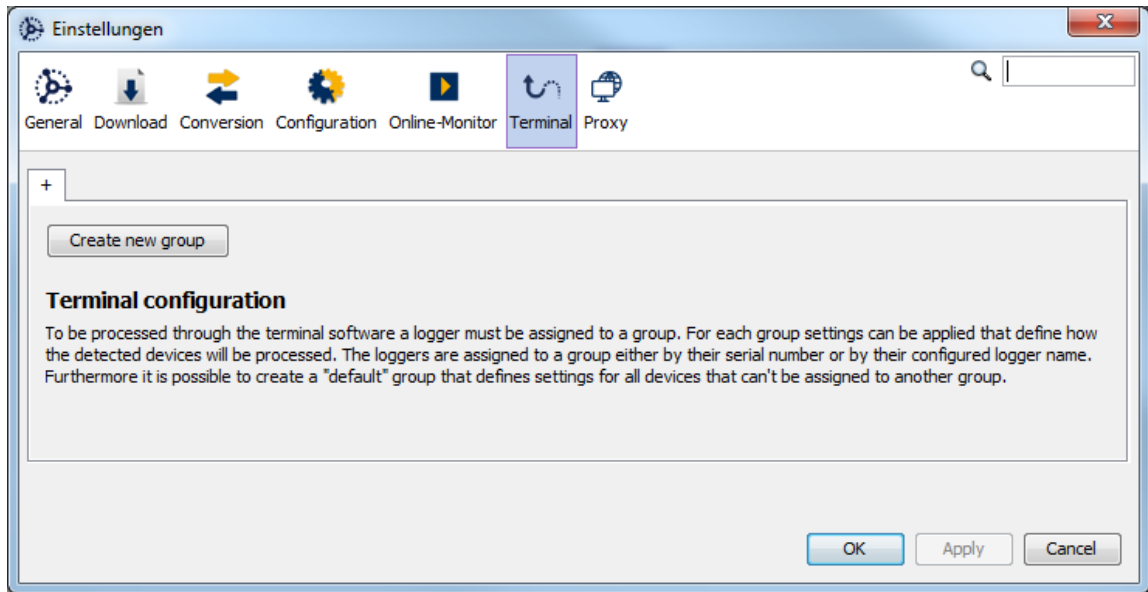



Figure 5.4: Settings for Download Terminal

Following the note you have to create a group in the first step by clicking  to which the devices can be assigned later.

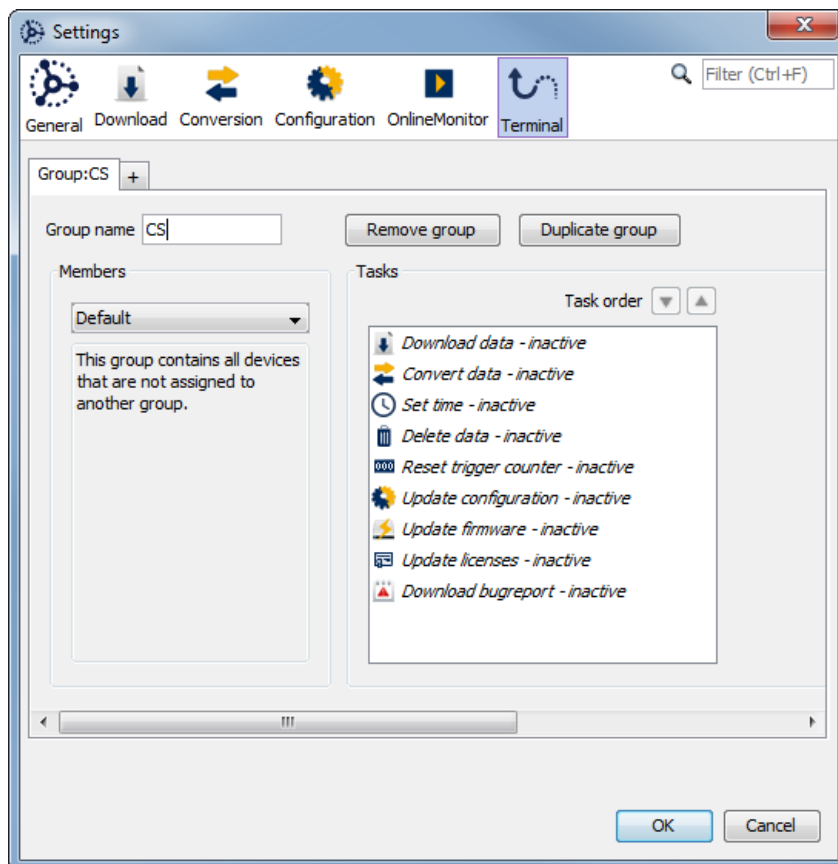


Figure 5.5: Creating a new group

5.1 Assigning devices to a group

These methods are available to assign a logger to a group:

- Default
- Identified by name
- Identified by S/N
- Identified by IP

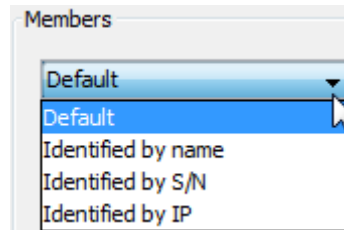
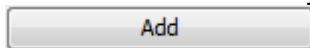


Figure 5.6: Assigning members to a group

Device can be added by writing them into the empty field and transfer them by the button



into the list.

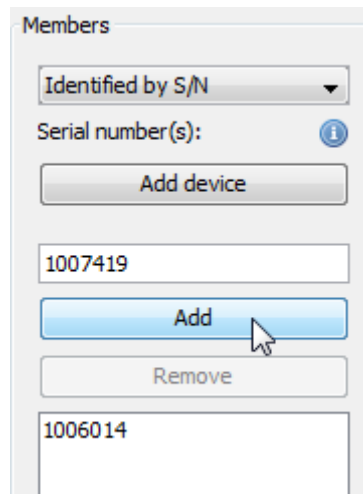


Figure 5.7: Adding the members

Devices can be removed from the list by clicking



5.1.1 Default

If the method is set to [default], all devices which are not assigned to another group are handled with the configured settings.

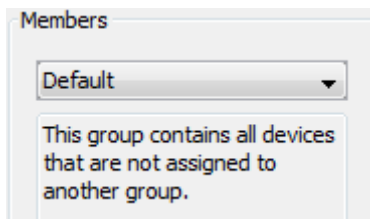


Figure 5.8: Members: default

Attention:

Do not use this option in huge networks where a lot of devices are available because all devices will be handled with these steps when the Download Terminal identifies this device.

[Index](#)

5.1.2 Identified by name

Members can be identified by their name. Available options are to identify them by the whole name, the beginning or a part at the name.

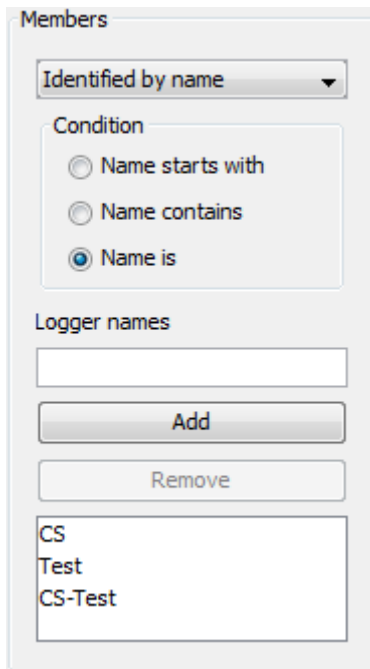


Figure 5.9: Members: identified by name

5.1.3 Identified by S/N

Their serial number can identify members too.

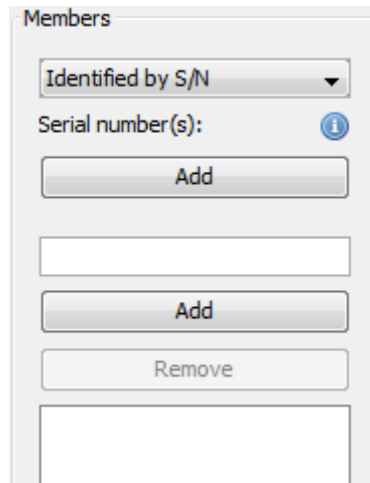



Figure 5.10: Members: identified by S/N

Devices or TSL cluster, which are active and reachable, can be added directly available by using the button **[Add]**.

Note:

A TSL-Cluster can be added by typing all serial numbers of the TSL into the field, divided by comma. Adding a TSL-Cluster by names or IP addresses is not possible.

Clicking on the info button  shows a hint about this procedure.

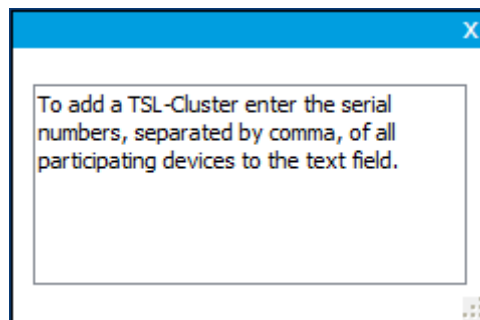


Figure 5.11: Note for adding a TSL-Cluster

There are two ways adding a TSL-Cluster:

1. using the button [Add device]
2. by entering the serial numbers, which must be separated by commas

5.1.3.1 Adding a TSL-Cluster by using the button [Add device]

Please click the **[Add device]** button.

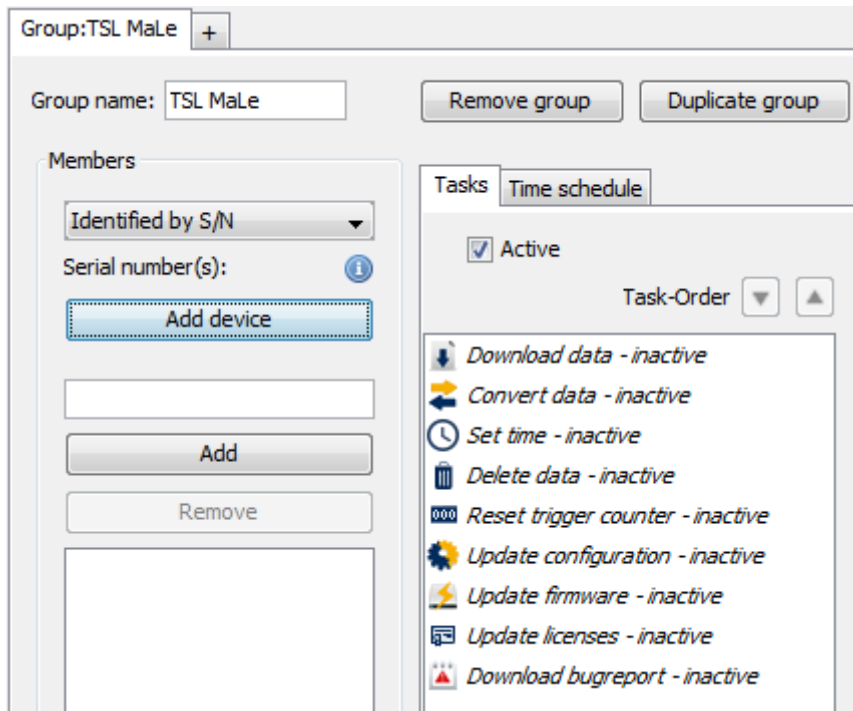


Figure 5.12: Button [Add device]

Now select the desired TSL-Cluster and click on the [Add] button.

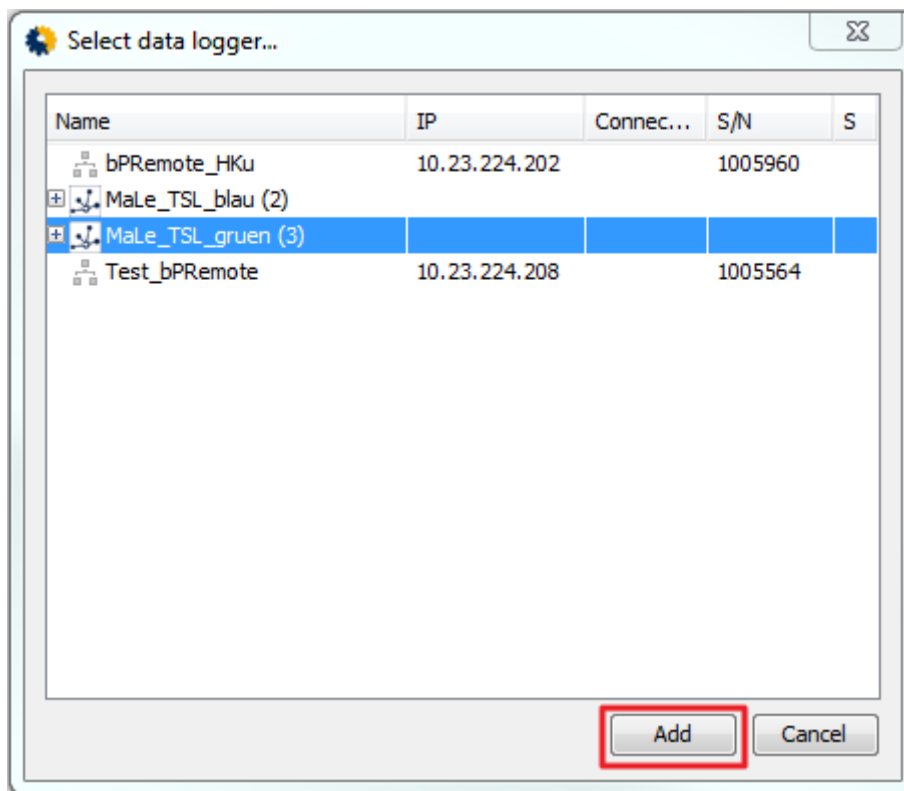


Figure 5.13: Selecting a TSL-Cluster

The members of the TSL-Cluster are then displayed with their serial numbers and the TSL icon in the list.

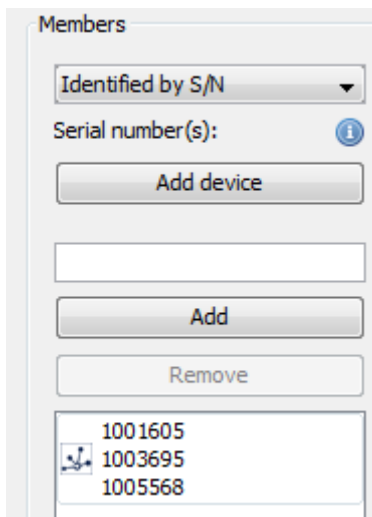


Figure 5.14: Display of a TSL-Cluster

5.1.3.2 Adding a TSL-Cluster by entering the serial number

The member of a TSL-Cluster can also be added by the serial number of the individual loggers separated by commas.

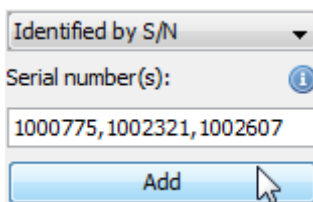


Figure 5.15: Adding a TSL-Cluster via serial number input

The members of the TSL-Cluster appears then with the TSL-icon in the list

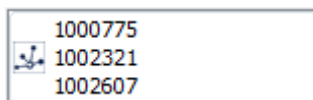


Figure 5.16: TSL-Cluster in the list

After the start of the Download Terminal, the data is downloaded from the entire TSL-Cluster.

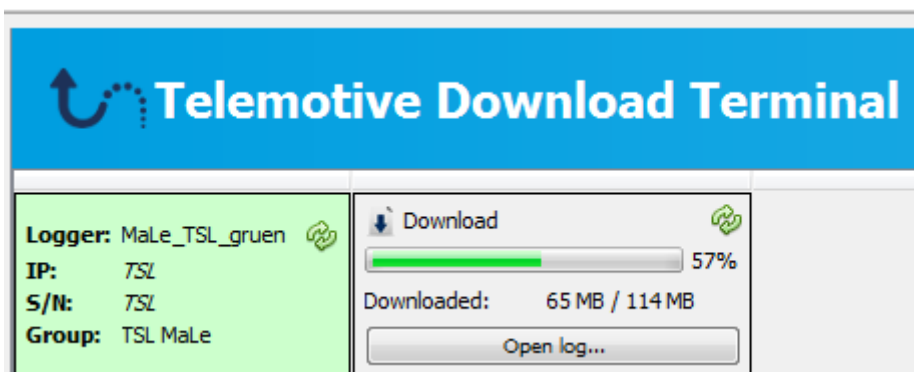


Figure 5.17: Shown name of a TSL-Cluster

5.1.4 Identified by IP

Devices also can be identified and assigned to a group by their IP address.

The subnet mask is automatically set to the range of the used computer. Otherwise the client wouldn't see the devices too.

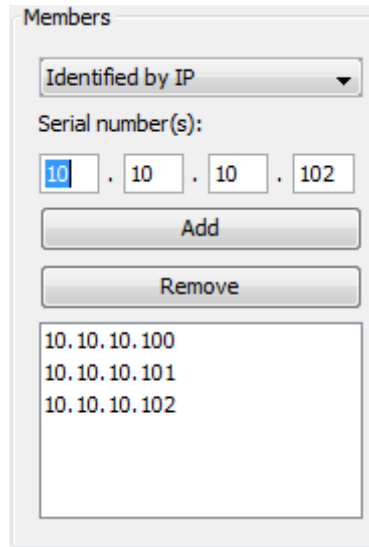


Figure 5.18: Identified by IP

5.1.5 Terminal IP address

The Telemotive data logger have a feature called “**Download Terminal**” which allows to connect several logger to one computer system for configuration, downloading or other features without the need to modify the network settings of each data logger.

For this feature every data logger has a second, fixed IP address in the subnet 10.1.X.Y which can be contacted by the System Client.

Attention:

To use this option your computers network port has to be set to the fixed IP address 10.1.255.254 and subnet mask 255.255.0.0.

To set this IP address, please go to the specific network connection at **[Properties]** change the IP settings and close the window with **[OK]**.

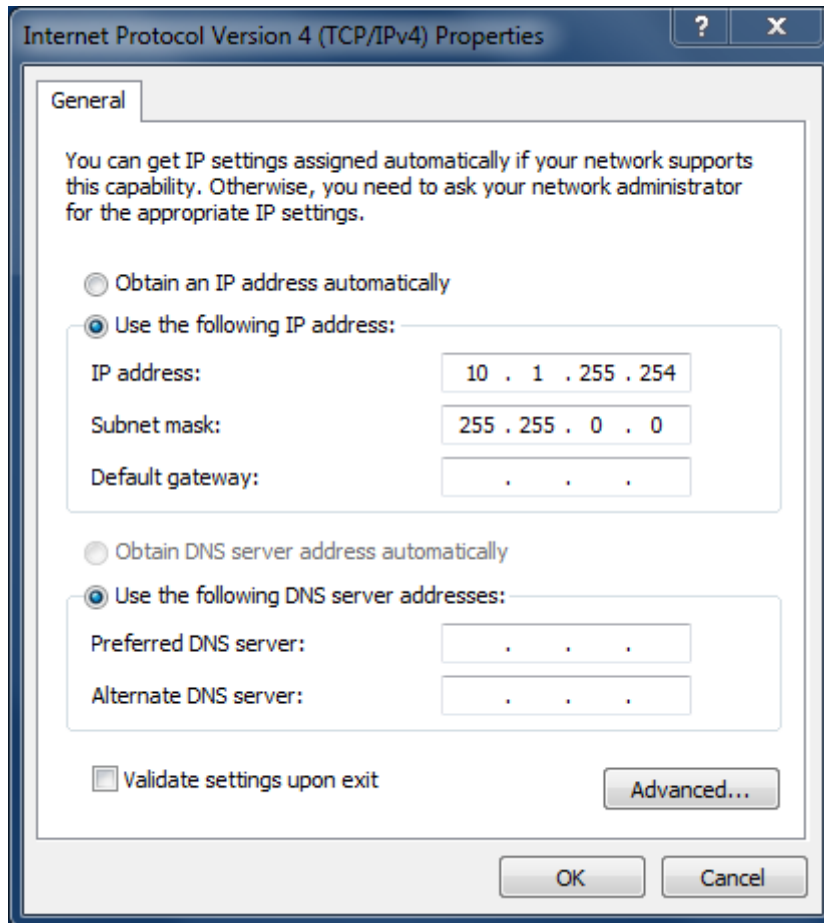


Figure 5.19: Change IP settings

When this is done the System Client establishes the connection to the data loggers and the devices can be used. There will be no conflicts while using more than one data logger as DHCP-Server in **Download Terminal** mode.

5.1.6 Activation & deactivation of groups

Every group can be activated or deactivates separately.

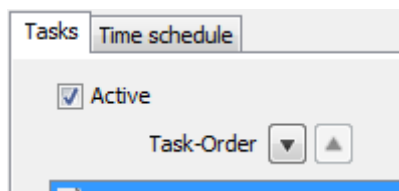


Figure 5.20: Activation & deactivation of groups

6 Available tasks

Every group can contain a list of tasks which will be executed when a device is recognized by **Download Terminal**. You can choose individual which task is needed for every group as well as you can set the order of the tasks. The execution of the tasks has some logical limitations so you can't download data after a firmware upgrade because the upgrade deletes all data.

These limitations are shown in the settings window as notes in red

When a task is marked in the list, the settings for this task are shown on the right side

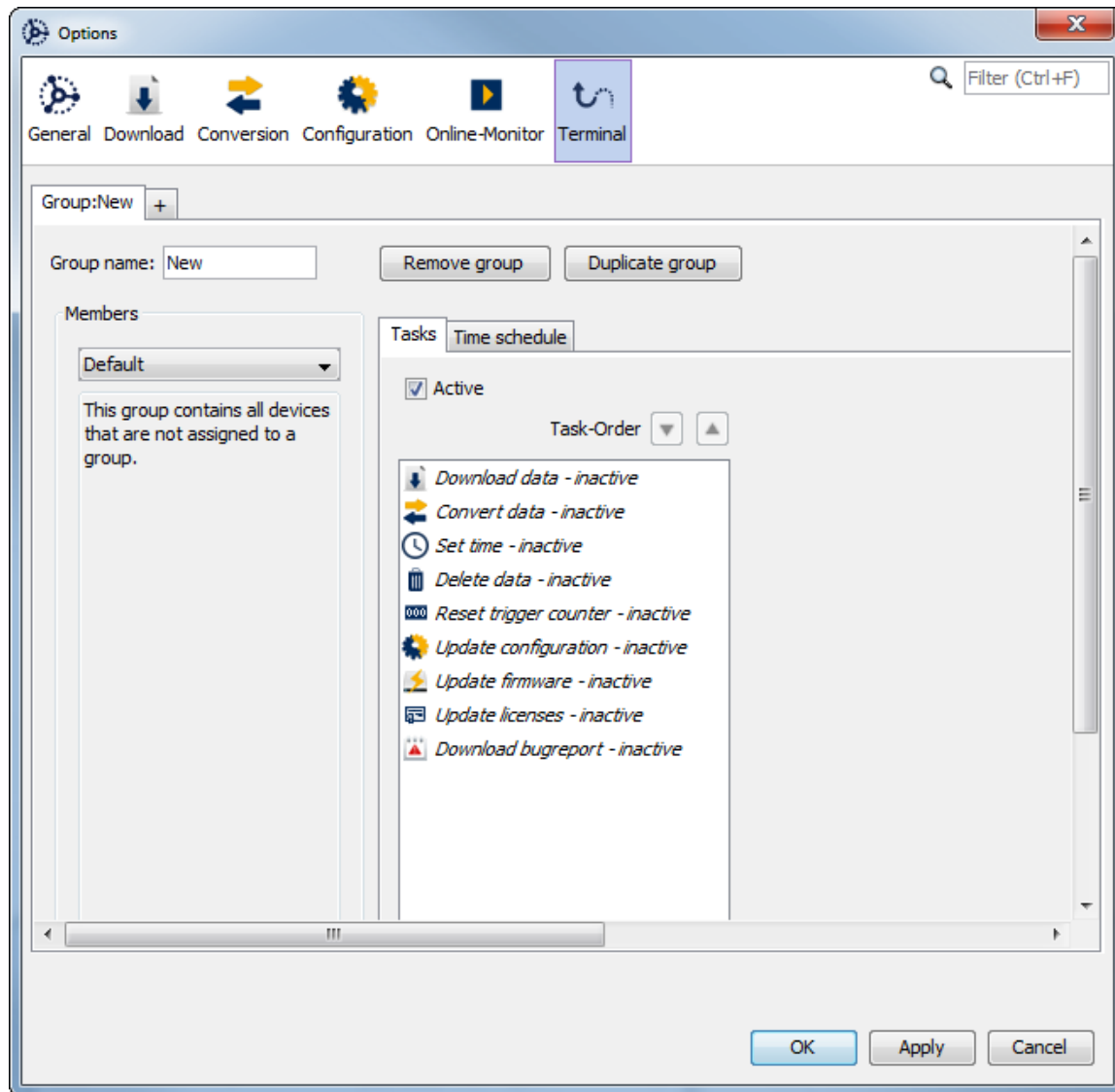
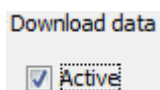


Figure 6.1: The task list

Every single task can be set as active or not active by marking the field **[Active]**.



6.1 Download data

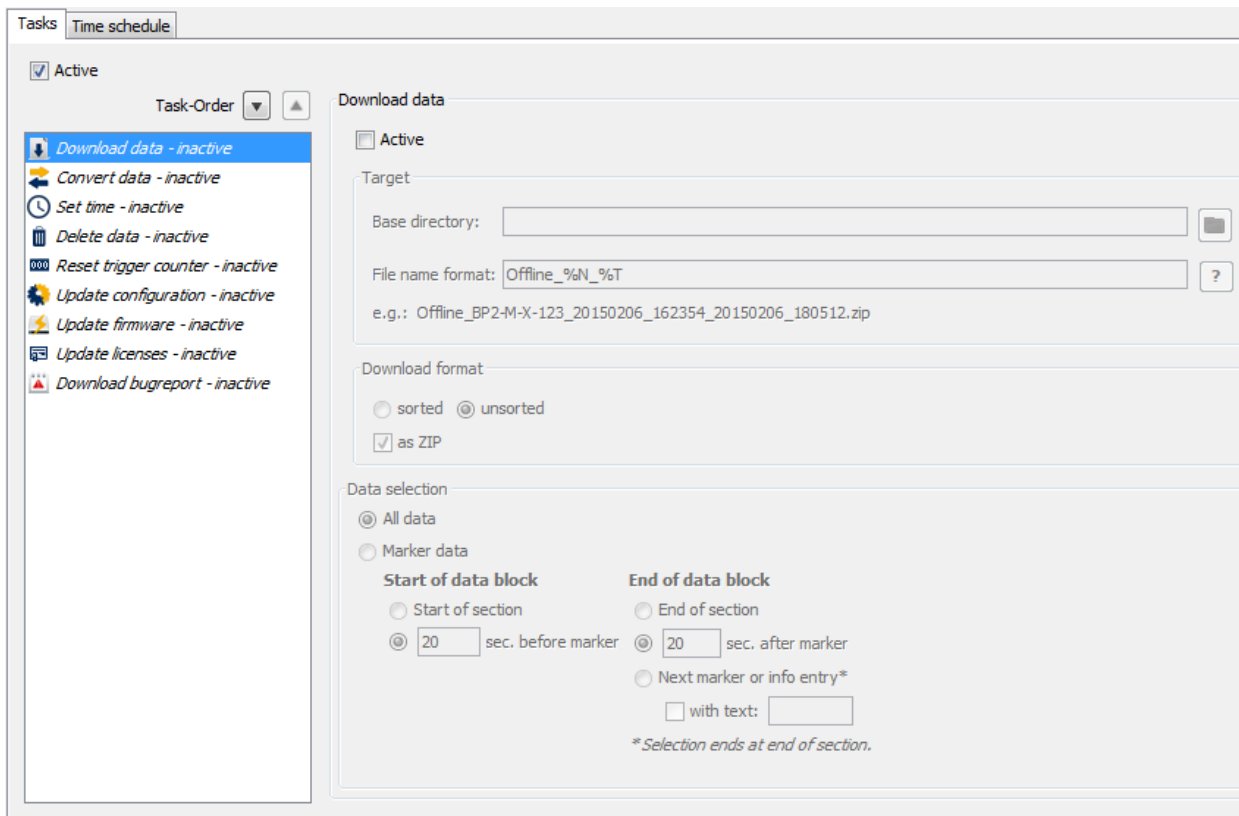


Figure 6.2: Task: Download data

For using the data download task it is obligatory to set a base directory first. The field for the base directory is marked in red,

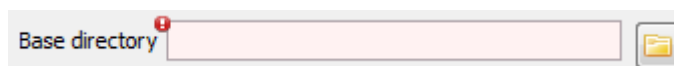


Figure 6.3: Note for settings

and additional shown on the bottom of the window.

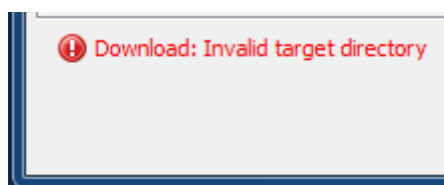


Figure 6.4: Note at the footer

By using the button  it is possible to navigate to the base directory you want to use.

The file name format can be modified by using variables which will be integrated automatically.

Using the specified placeholders you can specify how the offline data set will be stored to your local drive. Device name (%N) and the time span (%T) have to be specified at least once.

Note that you can create subdirectories by entering "/" or "\" to the file name format.

- %D, %d Date, e.g. "[2015-02-06]"
- %N, %n Device name
- %T, %t Start and end time
- %S, %s Device serial number

Example:

%N\Offline_%T -> Device name\Offline_20150206_154312_20150206_164802.zip

Note:

Take care that you choose a base directory with enough free memory.

Analog to the System Client, you can select the download format

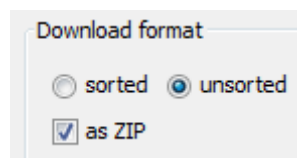


Figure 6.5: Download format

and the data you want to download.

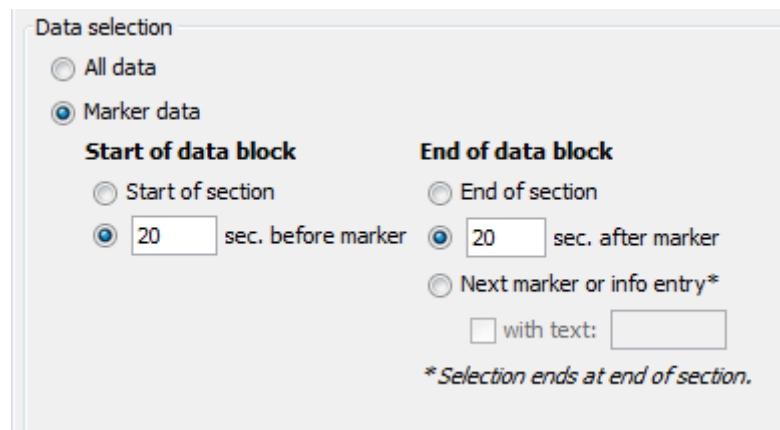


Figure 6.6: Data selection

6.2 Converting data

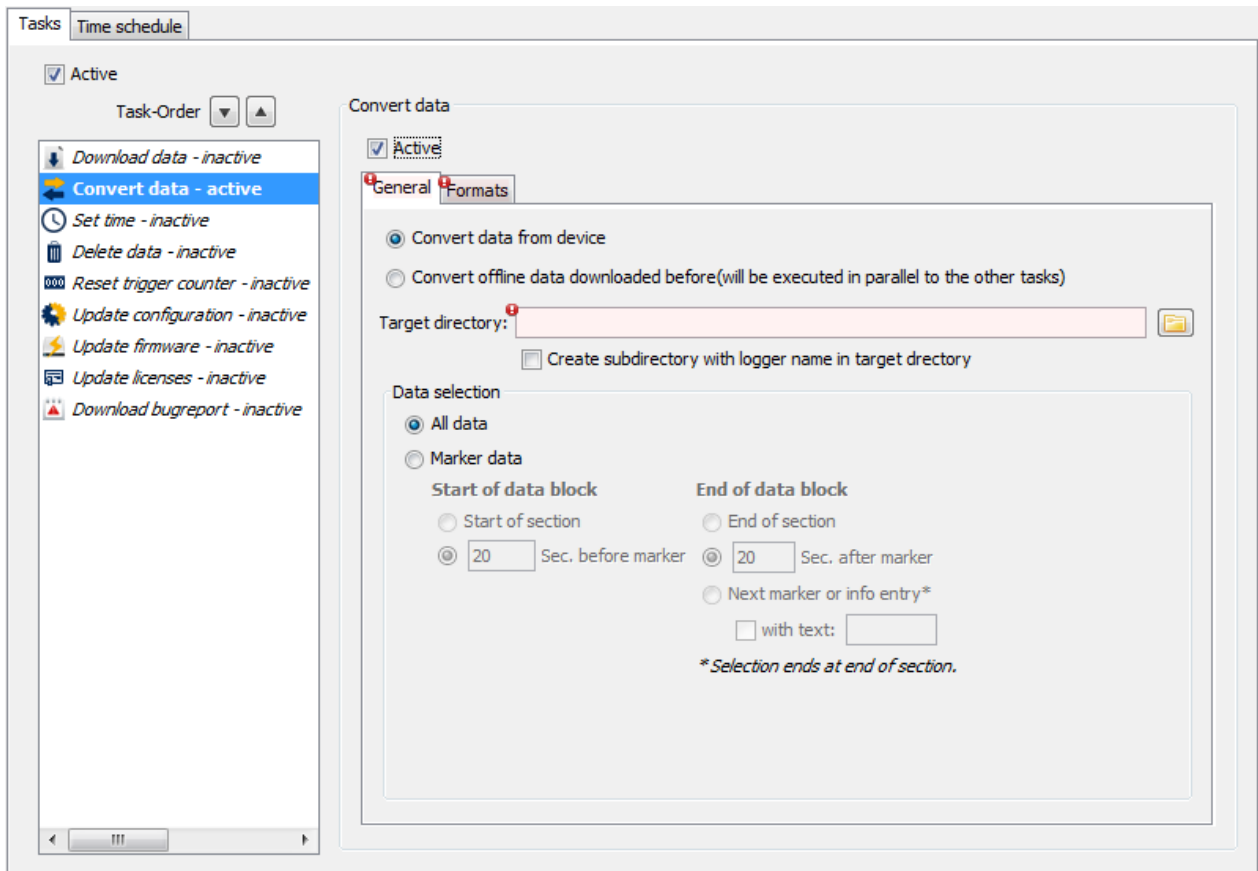


Figure 6.7: Task: Convert data

For converting data it is obligatory too to set a target directory in the tab **[General]**. It is possible to create a sub directory with the logger name in the target directory to have a better overview about the data.

The data selection options are the same as those offered in the System Client.

It is also possible to convert offline data in Download Terminal. In this case the data will be downloaded in an earlier task and be converted later. This reduces the time, a device has to be connected to the network.

This option is only available if **[Download data]** is active. If **[Convert offline data]** is activated without **[Download data]** a note is shown.

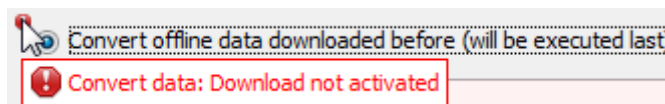


Figure 6.8: Warning when Download is not activated

In the tab **[Formats]** you can set the target formats for all channels.

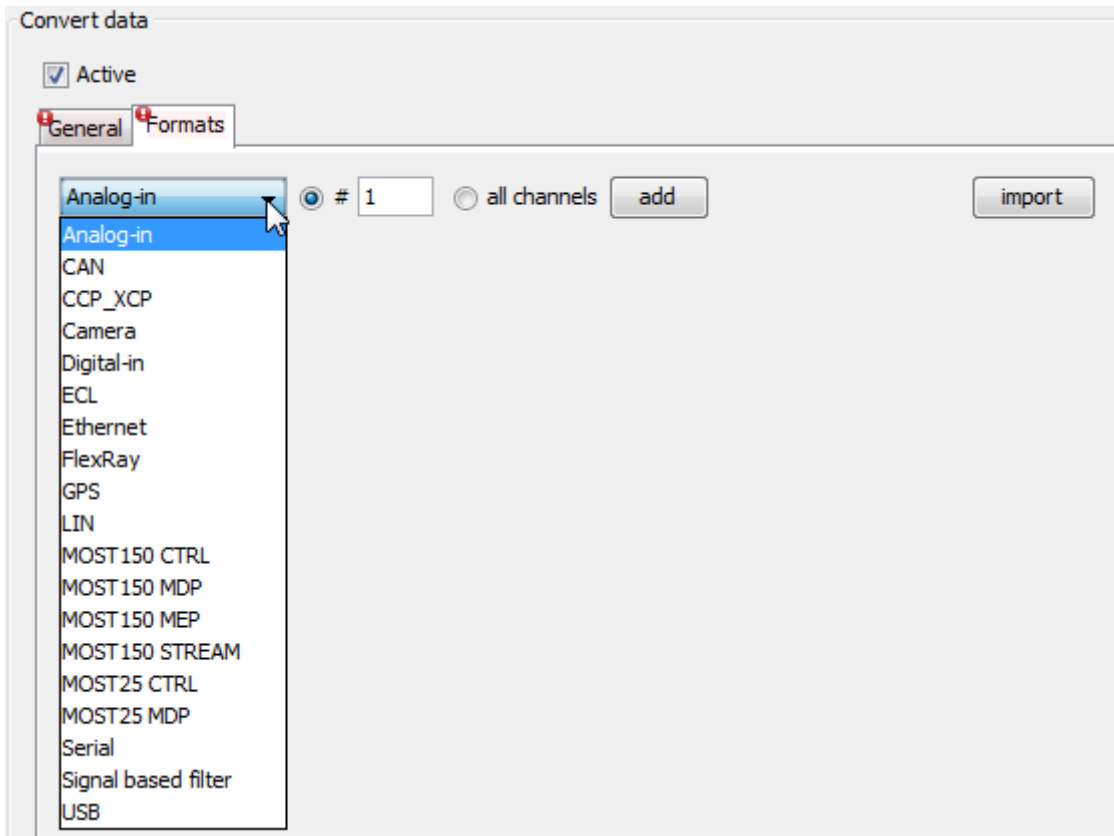


Figure 6.9: Available channels

Here you can choose as well single channels (CAN #1) as well as all channels of one interface (e.g. LIN)

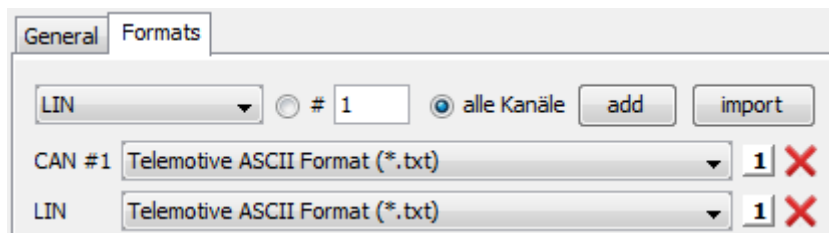


Figure 6.10: channel settings

In Download Terminal you can sort data by colour ID into one or different data files like this option is available in the client.

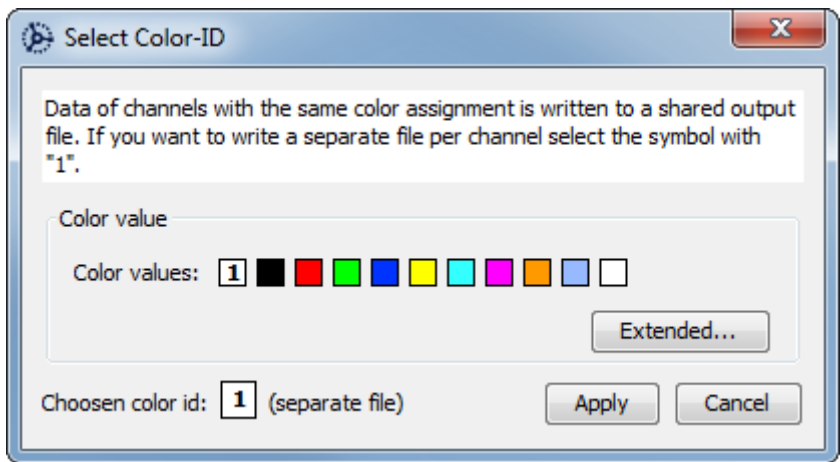



Figure 6.11: color ID

Over the button  it is possible to import settings which were set and exported earlier in the client.

6.3 Set time

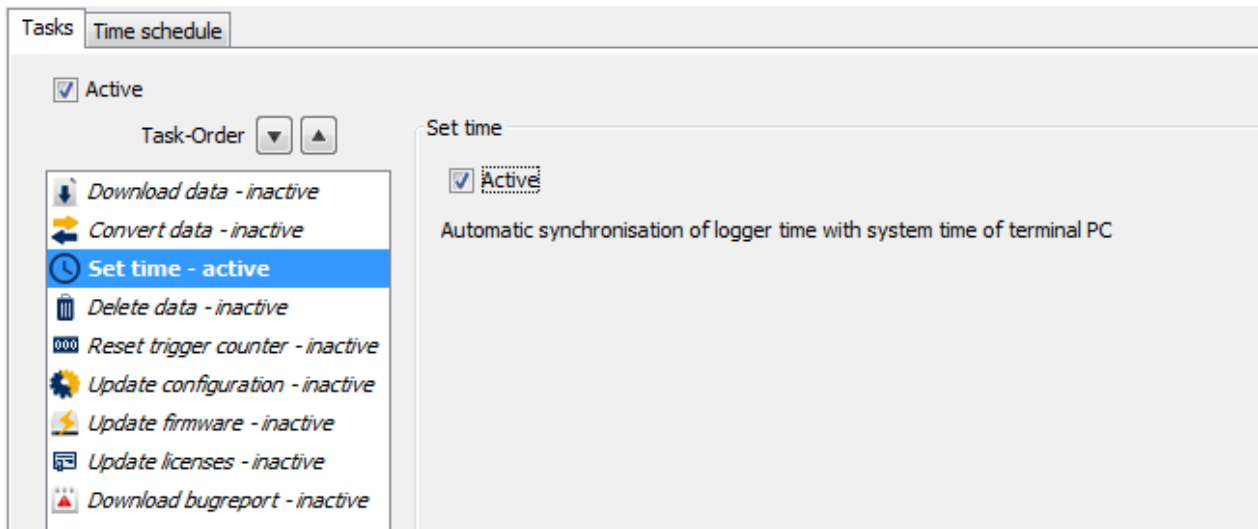


Figure 6.12: Task: Set time

To avoid time differences it is possible to set the time every time the device is connected to Download Terminal

6.4 Delete data

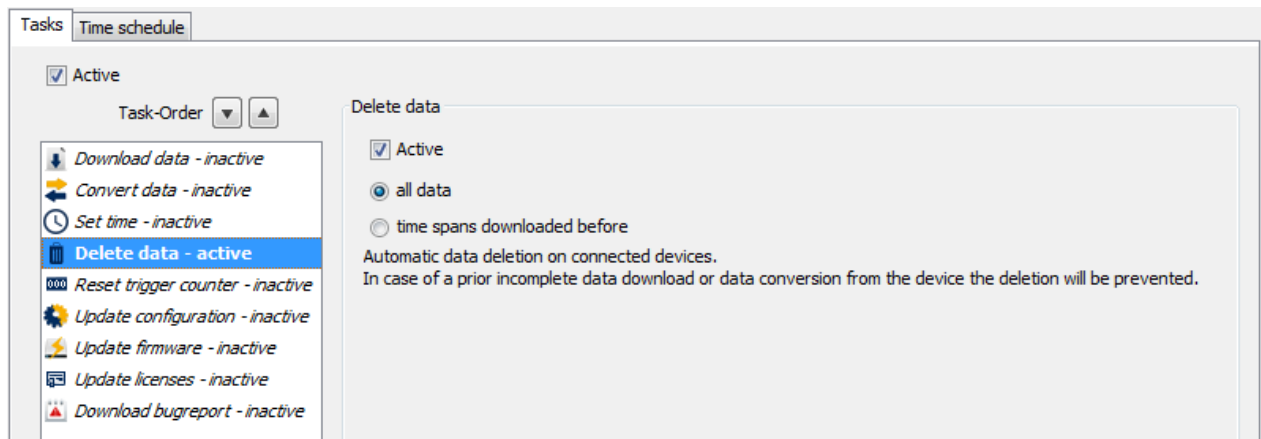


Figure 6.13: Task: Delete data

To get free memory space on the device it is possible to delete data on the device. The options are:

- all data
- data downloaded before

In case the data download in an earlier task was not successful, the data will not be deleted.

6.5 Rest trigger counter

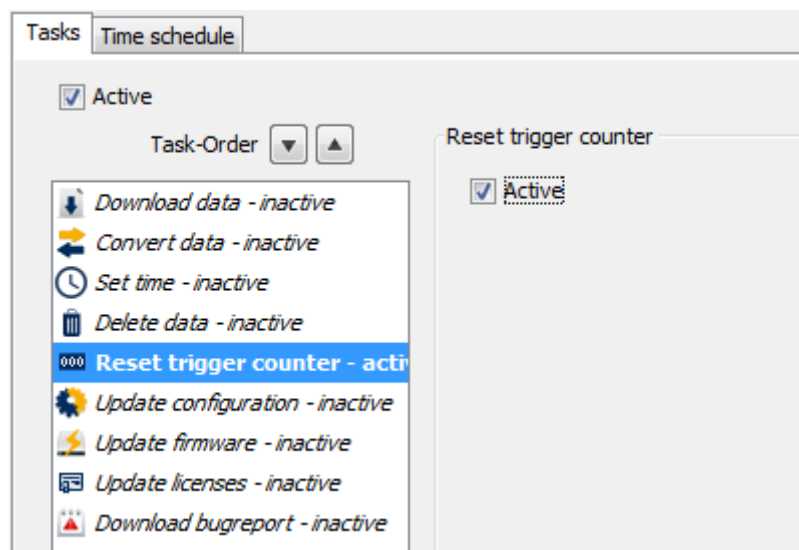


Figure 6.14: Task: Reset trigger counter

It is also possible to reset the trigger counter in Download Terminal.

6.6 Update configuration

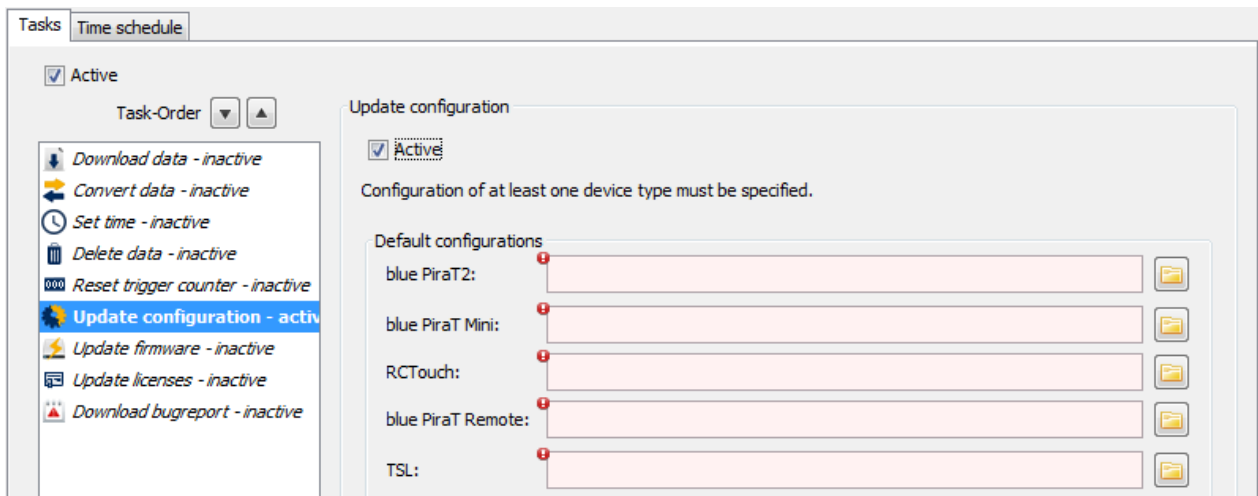


Figure 6.15: Task: Update configuration

Download Terminal can also update configurations of connected devices. You can define firmware packages for:

- BLUEPIRAT2
- BLUEPIRAT Mini
- RCTouch
- BLUEPIRAT Remote
- TSL

For every kind of device a separate configuration can be assigned.

Note: The name of the device will not be changed because in this case all devices in a TSL cluster would get the same name!

6.7 Update firmware

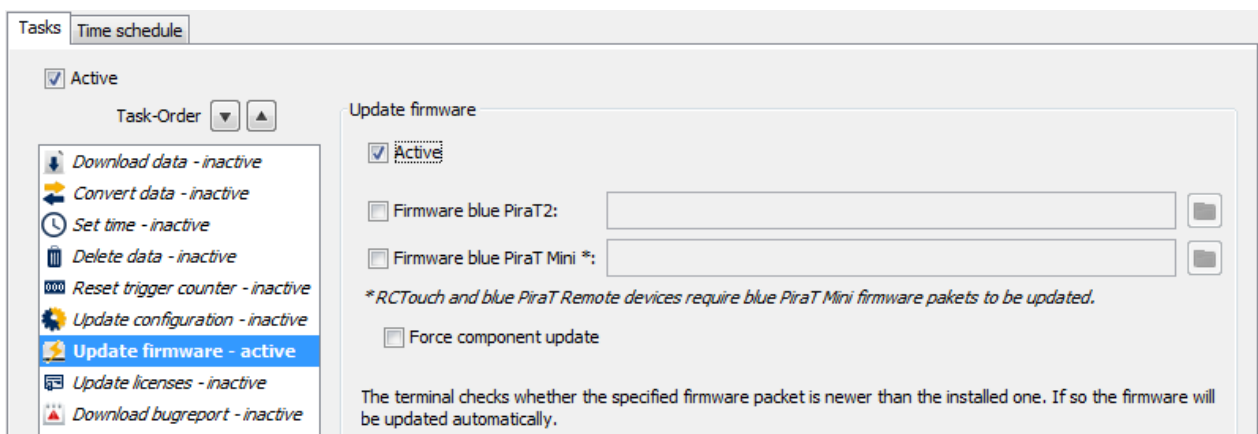


Figure 6.16: Task: Update firmware

The task **[Update firmware]** allows to update the firmware of every kind of devices. In the first step the type, and in the second step the file for the update has to be defined.

Please note that the firmware for **Remote Control Touch** or **BLUEPIRAT Remote** is the same as for **BLUEPIRAT Mini**.

6.8 Update licenses

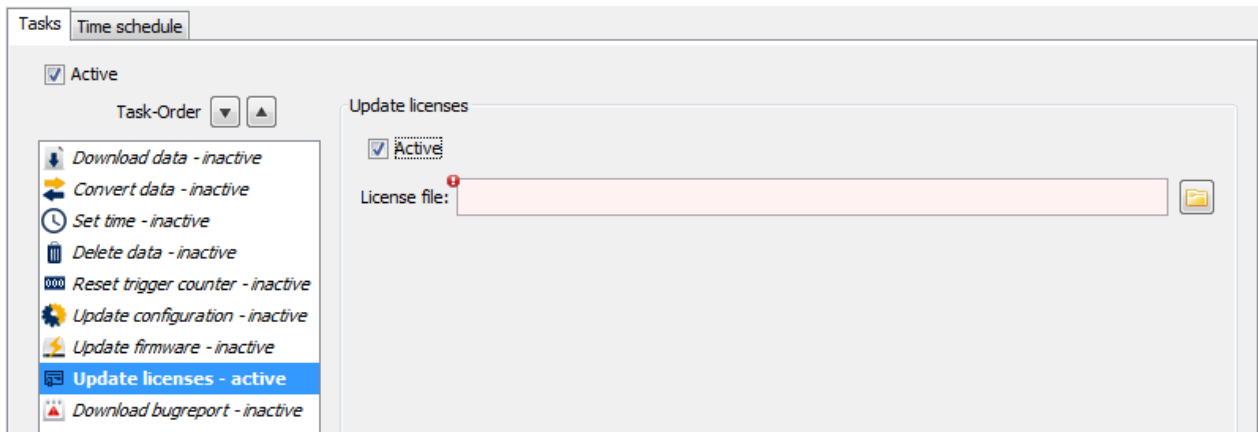


Figure 6.17: Task: Update licenses

When a license for a defined group is available, Download Terminal allows updating the license for all members of this group too. For that the license file has to be selected in this field.

6.9 Download bugreport

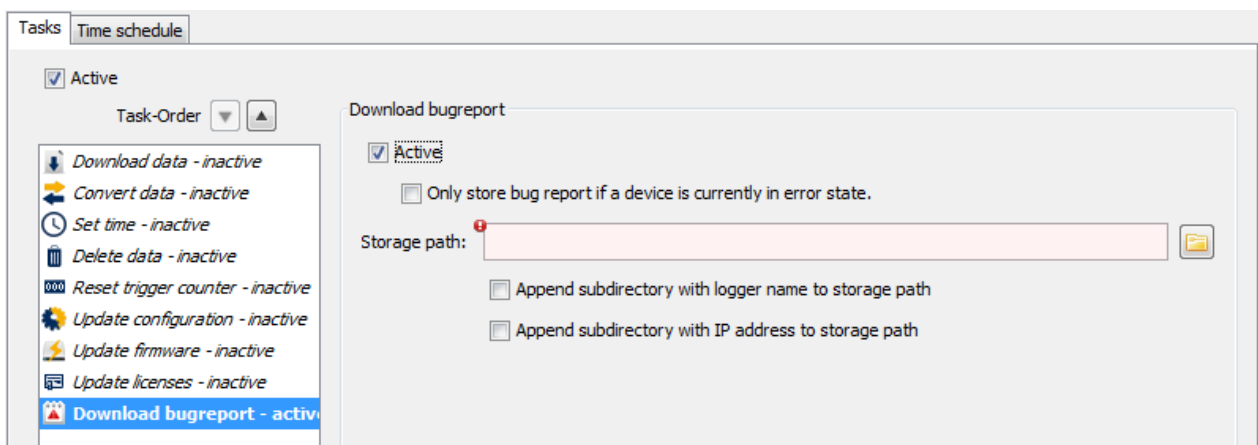


Figure 6.18: Task: Download bugreport

When a logger is connected to Download Terminal, a bugreport can be downloaded from the logger and saved to a defined directory automatically. There can be set that this only will be done when the device reports an error. Additional a sub folder with the name of the logger or its IP address can be implemented.

6.10 Task order

The order of the tasks for a defined group can be set by using the menu at the top of the task list. Mark a task and move it by using the two arrows to the place where it is needed.

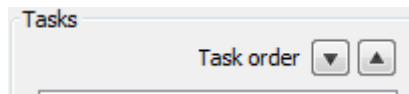


Figure 6.19: Setting the Task order

6.11 Saving the group

If all settings are done and correct, the group can be saved by using the button **[OK]**. For saving the settings in between, please click on **[Apply]**.

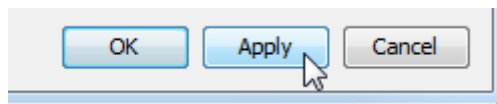


Figure 6.20: Saving the group

Note:

The group can't be saved as long as in one of the active tasks an error is shown!

6.12 Administrating groups

When a group is saved, it can be duplicated by the button **[Duplicate group]** to create a new group with similar settings and different members.

Groups which will never been used can be deleted by **[Remove group]**.



Figure 6.21: Administrating groups

To create a totally new group, please use the button **[+]** to open one more tab for a new group.

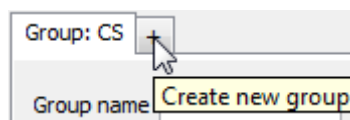


Figure 6.22: Creating a new group

6.13 Time schedule

When all tasks are defined, a time schedule for the doing can be activated, so that e.g. in a test environment, when the devices are reachable permanently, the task will be done at specified times only.

Tasks Time schedule

Time period

Time scheduling active

If time scheduling is active, within the stated interval the terminal software acts just as with deactivated time scheduling. That is, every logger detection within the stated interval will lead to a processing of the activated tasks. If a device shall be processed only once per interval, select the appropriate option below.

Repetition:

Start

Day:

Time:

End

Day:

Time:

Process activated tasks only once per interval

Figure 6.23: Activating Time schedule

The time schedule can be set to given times and a repetition can be set to ***None***, ***Daily*** or ***Weekly***.

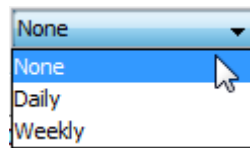


Figure 6.24: setting the repetition

7 Starting the Download Terminal

The settings window is closing after saving the group and the user sees the terminal window.

In the upper right corner there's a link to this **manual**.

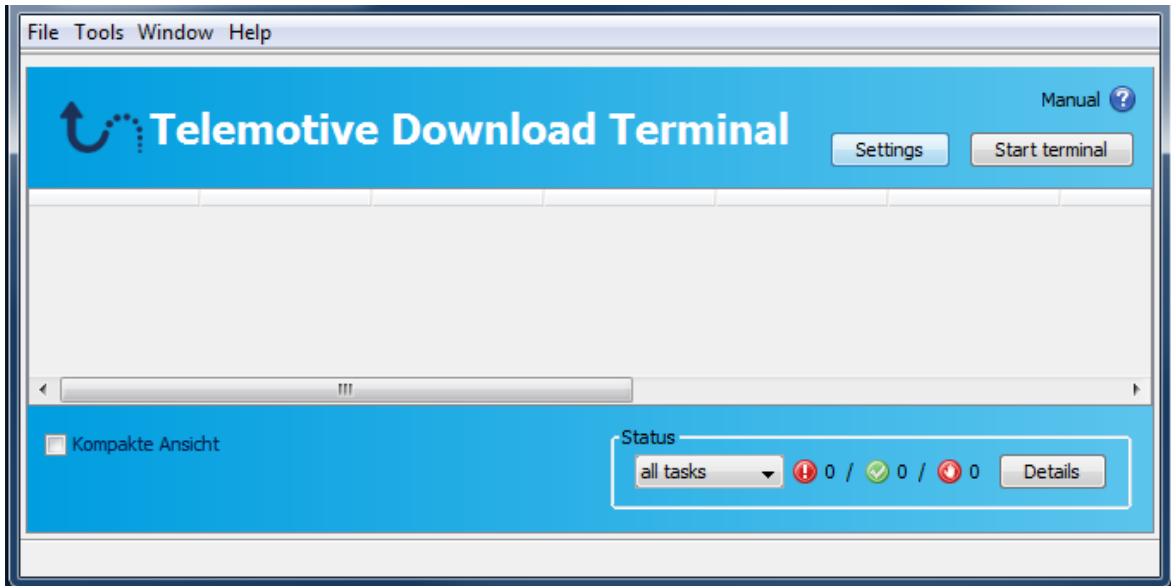
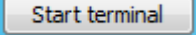


Figure 7.1: The Terminal window

By activating the button  the terminal is starting and is waiting to identify devices in the network.

Devices without a valid license are not recognized by Download Terminal!

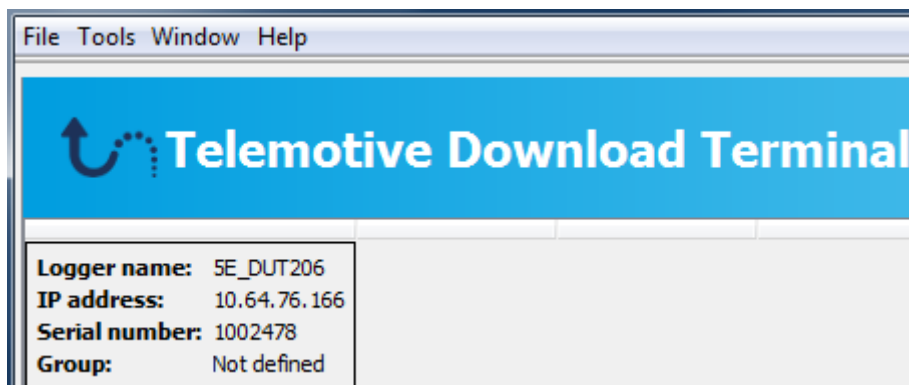


Figure 7.2: An identified device which is in no group

When Download Terminal identifies a device, which is in none of the configured groups, the background of the device information is still grey. The device information shows these information:

- Logger name
- IP address
- Serial number
- Group
- A note, when the device is blocked by another user

Logger name:	5E_DUT206
IP address:	10.64.76.166
Serial number:	1002478
Group:	Not defined

Figure 7.3: Device information

If there are too many devices in the list the list can be shown in a compact version where only the logger name and IP address are shown. To activate this option the setting for **[Kompakte Ansicht]** **Kompakte Ansicht** has to be marked.

Logger name:	5E_DUT206
IP address:	10.64.76.166

Figure 7.4: Device information - compact view

When a device is recognized by Download Terminal and identified as a member of a group, the entire tasks start to run automatically.

The background of the device is shown in green and the configured tasks are shown in the order they will be done.

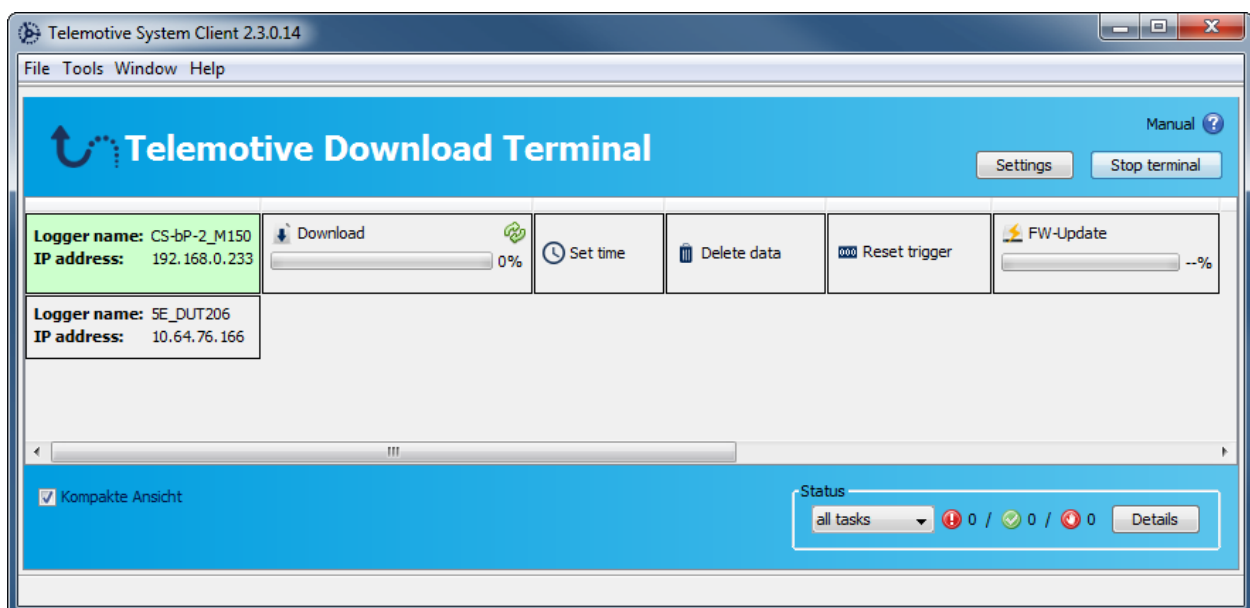


Figure 7.5: Identified from a defined group

The eradication of the tasks is shown step by step in the terminal window. If a task is done the background of the task turned into green.



Figure 7.6: The eradication of the tasks

When errors occur during the tasks are processed, the background of the task is marked in red so that errors are shown in an easy way.

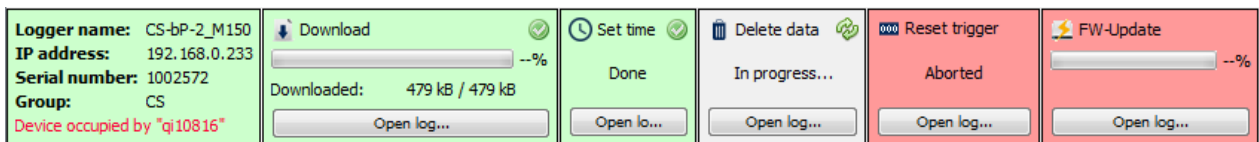


Figure 7.7: Errors in the eradication

8 Abbreviations

Kürzel / abbreviation	Bedeutung / meaning
BLUEPIRAT	Processing Information Recording Analyzing Tool
bP	BLUEPIRAT
bP2	BLUEPIRAT2
bP2 5E	BLUEPIRAT2 5E
bPMini	BLUEPIRAT Mini
RC Touch	Remote Control Touch
bP Remote	BLUEPIRAT Remote
A2L	ASAM MCD-2 MC Language
AE	Automotive Electronics
ACK	ACKnowledged
CAN	Controller Area Network
CCP	CAN Calibration Protocol
CF	Compact Flash
CRO	Command Receive Object
DAQ	Data Acquisition
DTO	Data Transmission Object
ECL	Electrical Control Line
ECU	Electronic Control Unit
FIBEX	Field Bus Exchange Format
FW	Firmware
GMT	Greenwich Mean Time
INCA	INtegrated Calibration and Application Tool
LAN	Local Area Network = Netzwerk
LIN	Local Interconnect Network
MAC	Media Access Control
MCD	Measure Calibrate Diagnose
MDX	Meta Data EXchange Format
MEP	MOST Ethernet Packet
MOST	Media Oriented Systems Transport (www.mostnet.de)
ODT	Object Descriptor Table
ODX	Open Data EXchange
OEM	Original Equipment Manufacturer
PHY	PHYsical Bus Connect
PW	Password
RX	Receiver Data
SD	Secure Digital
SFTP	Secure File Transfer Protocol
SHA	Secure Hash
SSL	Secure Sockets Layer
TCP/IP	Transmission Control Protocol/Internet Protocol
TLS	Transport Layer Security
TMP	Telemotive Packetformat
TSL	Telemotive System Link
UDP	User Datagram Protocol
USB	Universal Serial Bus

UTC	Universal Time, Coordinated
Wi-Fi	Wireless Fidelity
WLAN	Wireless Local Area Network
XCP	Universal Measurement and Calibration Protocol

Table 8.1: Abbreviations

9 List of figures

Figure 4.1: links to the manuals.....	9
Figure 5.1: Starting Download Terminal	12
Figure 5.2: Message if tabs are open.....	12
Figure 5.3: Starting Download Terminal	12
Figure 5.4: Settings for Download Terminal.....	13
Figure 5.5: Creating a new group	13
Figure 5.6: Assigning members to a group	14
Figure 5.7: Adding the members	14
Figure 5.8: Members: default.....	15
Figure 5.9: Members: identified by name.....	15
Figure 5.10: Members: identified by S/N.....	16
Figure 5.11: Note for adding a TSL-Cluster	16
Figure 5.12: Button [Add device]	17
Figure 5.13: Selecting a TSL-Cluster.....	17
Figure 5.14: Display of a TSL-Cluster.....	18
Figure 5.15: Adding a TSL-Cluster via serial number input.....	18
Figure 5.16: TSL-Cluster in the list	18
Figure 5.17: Shown name of a TSL-Cluster.....	19
Figure 5.18: Identified by IP.....	20
Figure 5.19: Change IP settings	21
Figure 5.20: Activation & deactivation of groups.....	21
Figure 6.1: The task list	22
Figure 6.2: Task: Download data	23
Figure 6.3: Note for settings	23
Figure 6.4: Note at the footer.....	23
Figure 6.5: Download format	24
Figure 6.6: Data selection.....	24
Figure 6.7: Task: Convert data	25
Figure 6.8: Warning when Download is not activated	25
Figure 6.9: Available channels.....	26
Figure 6.10: channel settings.....	26
Figure 6.11: color ID.....	27
Figure 6.12: Task: Set time	27
Figure 6.13: Task: Delete data	28
Figure 6.14: Task: Reset trigger counter	28
Figure 6.15: Task: Update configuration.....	29
Figure 6.16: Task: Update firmware.....	29
Figure 6.17: Task: Update licenses	30
Figure 6.18: Task: Download bugreport.....	30
Figure 6.19: Setting the Task order	31
Figure 6.20: Saving the group	31
Figure 6.21: Administrating groups.....	31
Figure 6.22: Creating a new group	31
Figure 6.23: Activating Time schedule.....	32
Figure 6.24: setting the repetition	32
Figure 7.1: The Terminal window	33
Figure 7.2: An identified device which is in no group	33
Figure 7.3: Device information.....	34
Figure 7.4: Device information - compact view	34
Figure 7.5: Identified from a defined group	34
Figure 7.6: The eradication of the tasks.....	35
Figure 7.7: Errors in the eradication.....	35
Figure 7.8: Status display	36
Figure 7.9: Filtering the status display	36
Figure 7.10: Terminal history.....	36

Figure 7.11: Look at the log..... 37
Figure 7.12: deleting the Terminal history..... 37

[Index](#)

10 List of tables

Table 4.1: Additional features by optional licenses	10
Table 8.1: Abbreviations	39
Table 11.1: Version history	43

[Index](#)

11 Version history

Version	Änderung	Datum

Table 11.1: Version history

12 Contact



DRIVING **EXCELLENCE.**
INSPIRING **INNOVATION.**

MAGNA Telemotive GmbH

Office München
Frankfurter Ring 115a
80807 München / Germany

Tel.: +49 89 357186-0
Fax.: +49 89 357186-520
E-Mail: TMO.info@magna.com
Web: <https://telemotive.magna.com>

Sales
Tel.: +49 89 357186-550
Fax.: +49 89 357186-520
E-Mail: TMO.Sales@magna.com

Support
Tel.: +49 89 357186-518
E-Mail: TMO.productsupport@magna.com
ServiceCenter: <https://sc.telemotive.de/bluepirat>

© by MAGNA Telemotive GmbH
Subject to errors and to technical changes as part of product improvement.