

In our **ServiceCenter** you will find detailed **manuals** for all Telemotive devices and the **System Client** and some optional features we are offering.
If you do not have an account for the ServiceCenter please contact TMO.productsupport@magna.com.

1. Hook up the Remote Control Touch (RCT)

Step 1: Connect the **Remote Control Touch** to the vehicle battery or a power supply via the power harness (**red/Vbat+/clamp30** and **black/GND/-/clamp31**). (1.)



Step 2: Connect one Ethernet port with the Ethernet port of your computer by using an Ethernet cable. (2.)

Note: By default the device is configured as DHCP-Server with IP address 192.168.0.233!

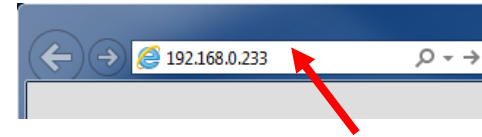
2. Power on/off the Remote Control Touch

Step 3: Switch on the device by pressing the **[Home]** button and wait until the device is ready. (3.)

For switching off the device please press the **[Home]** button for about 5 seconds till the **[Active]** LED starts pulsing. (3.)

3. Connecting to the Remote Control Touch

Step 4: Open your Internet browser, enter the IP address **192.168.0.233** and press enter.



Note:

- Make sure your network settings will be set to **“apply IP address automatically”**
- The needed Java Runtime Environment is included into the client and must not be installed separately.

The connection between the device and the computer will be established and the Client portal is shown.

4. Installing the System Client

Step 5: Please click on the image to start the download of the client (~ 130 MB) directly from the device. Then choose **[Save]** to save the file to your local computer.

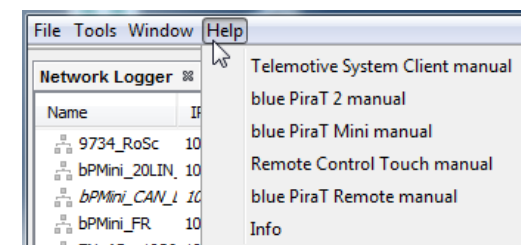
The installation setup can be started by double clicking on the setup file. Follow the instructions, choose a destination directory and finalize the installation by pressing **[Install]**.



Step 6: After installing successfully you will find the **System Client** icon on your desktop. Double-click the icon to start the application.



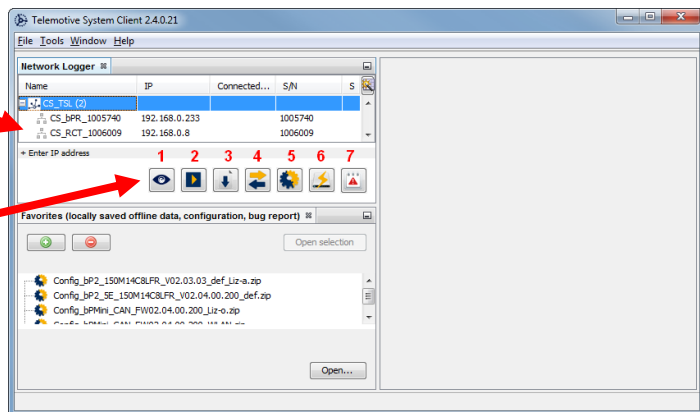
The item **[Help]** offers access to the links to the main manuals.



5. Using the System Client

Step 7: In the Network logger window you will find the connected devices (with the IP address from step 4). By pressing one of the 7 icons you can open this application for the selected **Remote Control Touch**.

Connected devices and TSL cluster



available applications

Available applications:

1. Live View
2. Online Monitor (for RCT not available in standalone mode)
3. Data download (for RCT not available in standalone mode)
4. Data conversion (for RCT not available in standalone mode)
5. Configuration menu
6. Firmware/License menu
7. Bug report menu

Contact

MAGNA Telemotive GmbH

Office München
Frankfurter Ring 115a
80807 München

Tel.: +49 89 357 186-0
Fax.: +49 89 357 186-520
E-Mail: TMO.info@magna.com
Web: www.telemotive.de

Sales

Tel.: +49 89 357 186-550
Fax.: +49 89 357 186-520
E-Mail: TMO.Sales@magna.com

Support

Tel.: +49 89 357 186-518
E-Mail: TMO.productsupport@magna.com
ServiceCenter: <https://sc.telemotive.de/bluepirat>

© by MAGNA Telemotive GmbH, 2019



BLUEPIRAT
BY MAGNA

Remote Control Touch

Start Up

Version 3.4.3 / 14.12.2018

