

In our **ServiceCenter** you will find detailed **manuals** for all MAGNA Telemotive devices and the **System Client** and some optional features we are offering.

If you do not have an account for the ServiceCenter please contact TMO.productsupport@magna.com

1. Hook up the blue PiraT2 5E

Step 1: Connect the **blue PiraT2 5E** to the vehicle battery or a power supply via the power harness (**red/Vbat/+clamp30** and **black/GND/-clamp31**).

Note: blue PiraT2 5E has a separate power cable which is separated from the main cable set!

ATTENTION: If you have ordered an external antenna eg. for GPS, the connector has to be bolt only by hand, NOT with any tools!



Step 2: Connect the Ethernet port with the Ethernet port of your computer by using an Ethernet cable.

Note: By default the device is configured as Automatic DHCP configuration for with IP address 192.168.0.233!



2. Power on/off the blue PiraT2 5E

Step 3: Switch on the blue PiraT2 5E by pressing the **[ON / Trigger]** button. The blue PiraT2 - Logo changes into showing the available interfaces.



To switch off the blue PiraT2 please press the **[OFF / Esc]** button for a few seconds.



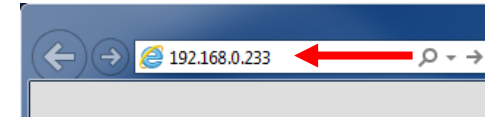
3. Connecting to the blue PiraT2 5E

Step 4: By pressing the rotary button you will enter the operation menu. Here you can navigate through the menu on the front display by rotating and pressing the rotary button.

Please choose here the Menu **[1] Info** navigate to infoscreen **9/10 IP**. The shown IP address will be needed in the next step.



Step 5: Open your Internet browser, enter the IP address from step 4 and confirm.



Note:

- Make sure your network settings will be set to **“apply IP address automatically”**
- The needed Java Runtime Environment is included into the client and must not be installed separately.

The connection between the device and the computer will be established and the Client portal is shown.

4. Installing the System Client

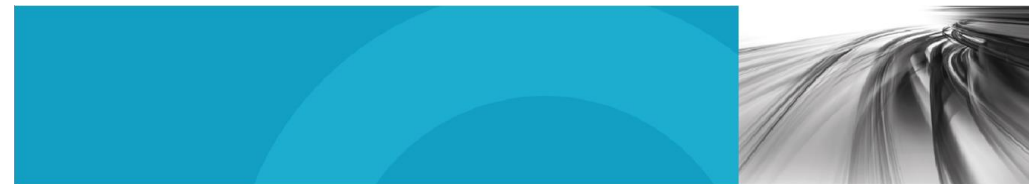
Step 6: Please click on the image to start the download of the client (~130 MB) directly from the logger. Then choose **[Save]** to save the file to your local computer.

The installation setup can be started by double clicking on the setup file. Follow the instructions, choose an installation directory and finalize the installation by pressing **[Install]**.



Step 7: After successful installation you will find the **System Client** icon on your desktop. Double-click the icon to start the application.

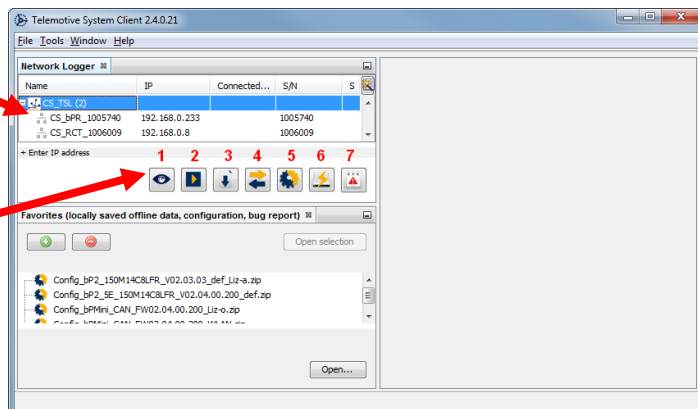




5. Using the System Client

Step 8: In the **Network logger** window you will find the connected **devices** (with the IP address from step 5).
By pressing one of the 7 icons you can open this application for the selected **blue PiraT2 5E**.

Connected devices
and TSL cluster



available applications

Available applications:

1. Live View
2. Online Monitor
3. Data download
4. Data conversion
5. Configuration menu
6. Firmware/License menu
7. Bug report menu

Note: You'll find the **manuals** for data logger and client in the menu item **[Help]**.

Contact

MAGNA Telemotive GmbH
Office München
Frankfurter Ring 115a
80807 München

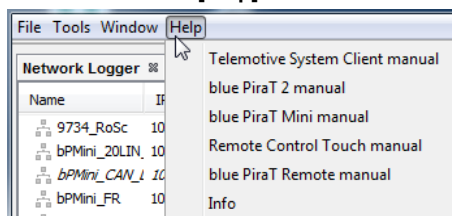
Tel.: +49 89 357 186-0
Fax.: +49 89 357 186-520
E-Mail: TMO.info@magna.com
Web: www.telemotive.de

Sales

Tel.: +49 89 357 186-550
Fax.: +49 89 357 186-520
E-Mail: TMO.Sales@magna.com

Support

Tel.: +49 89 357 186-518
E-Mail: TMO.productsupport@magna.com
ServiceCenter: <https://sc.telemotive.de/bluepirat>



BLUEPIRAT
BY MAGNA

blue PiraT2 5E

Start Up

Version 3.4.3 / 14.12.2018

