

In our **ServiceCenter** you will find detailed **manuals** for all MAGNA Telemotive devices and the **System Client** and some optional features we are offering.

If you do not have an account for the ServiceCenter please contact TMO.productsupport@magna.com

1. Hook up the blue PiraT2

Step 1: Connect the blue PiraT2 to the vehicle battery or a power supply via the power harness (red/Vbat/+clamp30 and black/GND/-clamp31).

ATTENTION: If you have ordered an external antenna eg. for GPS, the connector has to be bolt only by hand, NOT with any tools!



Step 2: Connect the Gigabit-Ethernet port with the Ethernet port of your computer by using a crosslink Ethernet cable.

Note: By default the device is configured as Automatic DHCP configuration for with IP address 192.168.0.233!



2. Power on/off the blue PiraT2

Step 3: Switch on the blue PiraT2 by pressing the **[Trigger]** button and wait until the logger is ready. The Telemotive-Logo changes into showing the available CAN and LIN ports..



To switch off the blue PiraT2 please press the **[Esc]** button for a few seconds.



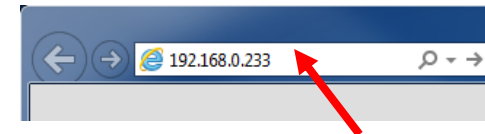
3. Connecting to the blue PiraT2

Step 4: By pressing the rotary button you will enter the operation menu. Here you can navigate by rotating and pressing the rotary button.

Please choose here the Menu **[1] Info** navigate to Infoscreen **9/10 IP**
The shown IP address will be needed in the next step.



Step 5: Open your Internet browser, enter the IP address from step 4 and confirm.



Note:

- Make sure your network settings will be set to **“apply IP address automatically”**
- The needed Java Runtime Environment is included into the client and must not be installed separately.

The connection between the device and the computer will be established and the Client portal is shown.

4. Installing the System Client

Step 6: Please click on the blue PiraT Mini image to start the download of the client (~130 MB) directly from the logger. Then choose **[Save]** to save the file to your local computer. The installation setup can be started by double clicking on the setup file. Follow the instructions, choose a destination directory and finalize the installation by pressing **[Install]**.



Step 7: After successful installation you will find the **System Client** icon on your desktop. Double-click the icon to start the application.

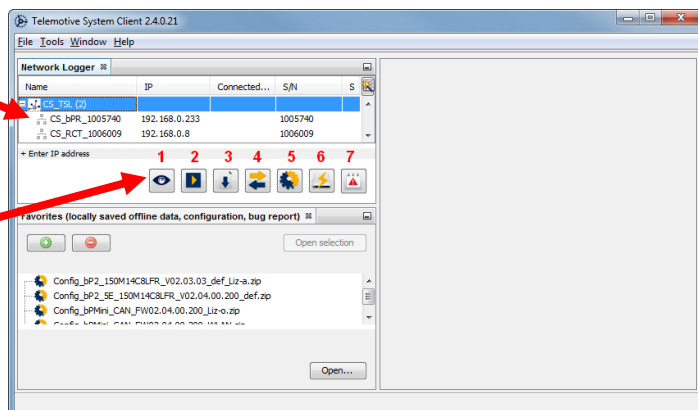


5. Using the System Client

Step 8: In the Network logger window you will find the connected devices (with the IP address from step 5).

By pressing one of the 7 icons you can open this application for the selected **blue PiraT2**.

connected devices
and TSL cluster



available applications

Available applications:

1. Live View
2. Online Monitor
3. Data download
4. Data conversion
5. Configuration menu
6. Firmware/License menu
7. Bug report menu

Note: You'll find the **manuals** for data logger and client in the menu item **[Help]**.

Contact

MAGNA Telemotive GmbH
Office München
Frankfurter Ring 115a
80807 München

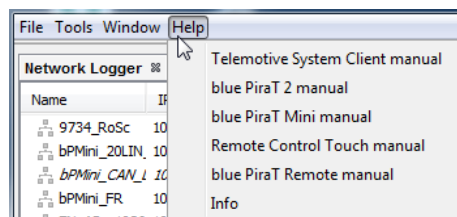
Tel.: +49 89 357 186-0
Fax.: +49 89 357 186-520
E-Mail: TMO.info@magna.com
Web: www.telemotive.de

Sales

Tel.: +49 89 357 186-550
Fax.: +49 89 357 186-520
E-Mail: TMO.Sales@magna.com

Support

Tel.: +49 89 357 186-518
E-Mail: TMO.productsupport@magna.com
ServiceCenter: <https://sc.telemotive.de/bluepirat>



BLUEPIRAT
BY MAGNA



blue PiraT2
Start Up / 22.03.2019

Version 3.6.x