

In our **ServiceCenter** you will find detailed **manuals** for all MAGNA Telemotive devices and the **System Client** and some optional features we are offering.
If you do not have an account for the ServiceCenter please contact TMO.productsupport@magna.com

1. Hook up the blue PiraT Mini

Step 1: Connect the **blue PiraT Mini** to the vehicle battery or a power supply via the power harness (red/Vbat/+/clamp30 and black/GND/-/clamp31).



Step 2: Connect the Gigabit-Ethernet port **ETH #1** with the Ethernet port of your computer by using a Ethernet cable.

Note: By default the device is configured as Automatic DHCP configuration for with IP address 192.168.0.233!



2. Power on/off the blue PiraT Mini

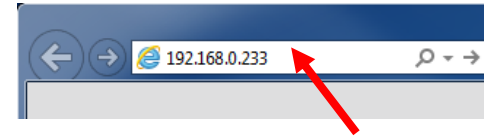
Step 3: Switch on the device by pressing the **[On / Trigger]** button and wait until the logger is ready.



For switching off the device please press the **[ON / Trigger]** button for about 5 seconds til the **[Active]** LED starts pulsing.

3. Connecting to the blue PiraT Mini

Step 4: Open your Internet browser, enter the IP address **192.168.0.233** and confirm.



Note:

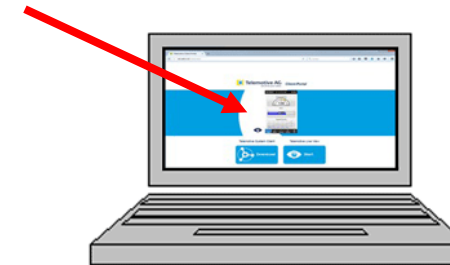
- Make sure your network settings will be set to **“apply IP address automatically”**
- The needed Java Runtime Environment is included into the client and must not be installed separately.

The connection between the device and the computer will be established and the Client portal is shown.

4. Installing the System Client

Step 5: Please click on the image to start the download of the client (~130 MB) directly from the logger. Then choose **[Save]** to save the file to your local computer.

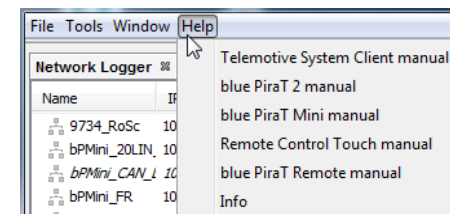
The installation setup can be started by double clicking on the setup file. Follow the instructions, choose a destination directory and finalize the installation by pressing **[Install]**.



Step 6: After successful installing you will find the **System Client** icon on your desktop. Double-click the icon to start the application.



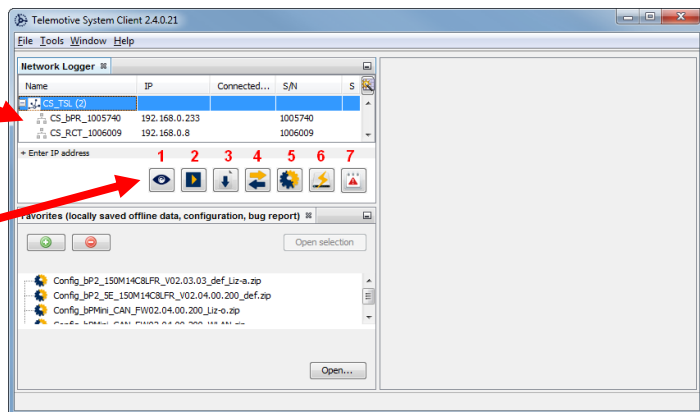
The item **[Help]** offers access to the links to the main manuals.



5. Using the System Client

Step 7: In the Network logger window you will find the connected devices (with the IP address from step 4). By pressing one of the 7 icons you can open this application for the selected **blue PiraT Mini**.

connected devices
and TSL cluster



available applications

Available applications:

1. Live View
2. Online Monitor
3. Data download
4. Data conversion
5. Configuration menu
6. Firmware/License menu
7. Bug report menu

Contact

MAGNA Telemotive GmbH

Office München
Frankfurter Ring 115a
80807 München

Tel.: +49 89 357 186-0
Fax.: +49 89 357 186-520
E-Mail: TMO.info@magna.com
Web: www.telemotive.de

Sales

Tel.: +49 89 357 186-550
Fax.: +49 89 357 186-520
E-Mail: TMO.Sales@magna.com

Support

Tel.: +49 89 357 186-518
E-Mail: TMO.productsupport@magna.com
ServiceCenter: <https://sc.telemotive.de/bluepirat>

© by MAGNA Telemotive GmbH, 2019



BLUEPIRAT
BY MAGNA

blue PiraT Mini

Start Up

Version 3.4.3 / 14.12.2018

