

In our **ServiceCenter** you will find detailed **manuals** for all MAGNA Telemotive devices and the **System Client** and some optional features we are offering.  
If you do not have an account for the ServiceCenter please contact [TMO.productsupport@magna.com](mailto:TMO.productsupport@magna.com)

### 1. Hook up the blue PiraT Remote

**Step 1:** Connect the **blue PiraT Remote** to the vehicle battery or a power supply via the power harness (**red/Vbat/+/clamp30** and **black/GND/-/clamp31**). **(1.)**



**Step 2:** Connect one Ethernet port with the Ethernet port of your computer by using an Ethernet cable. **(2.)**

**Note:** By default the device is configured as Automatic DHCP configuration for with IP address 192.168.0.233!

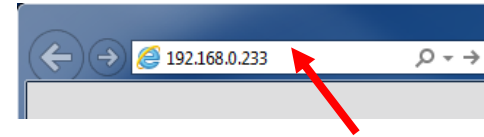
### 2. Power on/off the blue PiraT Remote

**Step 3:** Switch on the device by pressing the **[Home]** button and wait until the device is ready. **(3.)**

To switch off the device please press the **[Home]** button for about 5 seconds till the **[Active]** LED starts pulsing. **(3.)**

### 3. Connecting to the blue PiraT Remote

**Step 4:** Open your Internet browser, enter the IP address **192.168.0.233** and press enter.



**Note:**

- Make sure your network settings will be set to **“apply IP address automatically”**
- The needed Java Runtime Environment is included into the client and must not be installed separately.

The connection between the device and the computer will be established and the Client portal is shown.

### 4. Installing the System Client

**Step 5:** Please click on the image to start the download of the client (~130 MB) directly from the device. Then choose **[Save]** to save the file to your local computer.

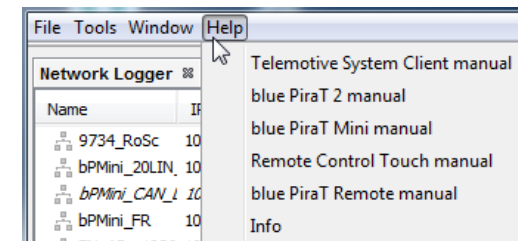
The installation setup can be started by double clicking on the setup file. Follow the instructions, choose a destination directory and finalize the installation by pressing **[Install]**.



**Step 6:** After successful installation you will find the **System Client** icon on your desktop. Double-click the icon to start the application.



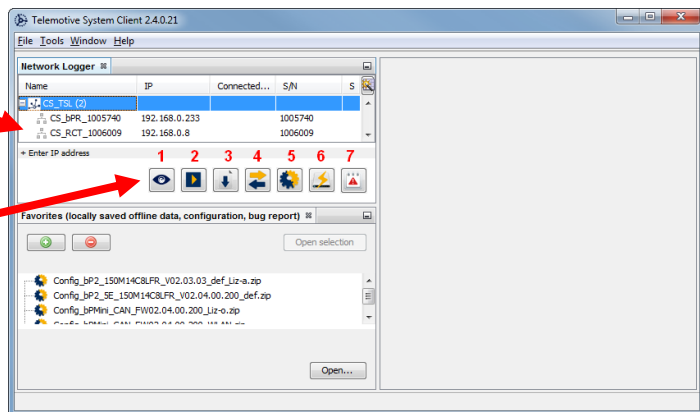
The item **[Help]** offers access to the links to the main manuals.



## 5. Using the System Client

**Step 7:** In the Network logger window you will find the connected devices (with the IP address from step 4). By pressing one of the 7 icons you can open this application for the selected **blue PiraT Remote**.

Connected devices and TSL cluster



available applications

### Available applications:

1. Live View
2. Online Monitor
3. Data download
4. Data conversion
5. Configuration menu
6. Firmware/License menu
7. Bug report menu

## Contact

### MAGNA Telemotive GmbH

Office München  
Frankfurter Ring 115a  
80807 München

Tel.: +49 89 357 186-0  
Fax.: +49 89 357 186-520  
E-Mail: [TMO.info@magna.com](mailto:TMO.info@magna.com)  
Web: [www.telemotive.de](http://www.telemotive.de)

### Sales

Tel.: +49 89 357 186-550  
Fax.: +49 89 357 186-520  
E-Mail: [TMO.Sales@magna.com](mailto:TMO.Sales@magna.com)

### Support

Tel.: +49 89 357 186-518  
E-Mail: [TMO.productsupport@magna.com](mailto:TMO.productsupport@magna.com)  
ServiceCenter: <https://sc.telemotive.de/bluepirat>

© by MAGNA Telemotive GmbH, 2019



**BLUEPIRAT**  
BY MAGNA

## blue PiraT Remote

### Start Up

Version 3.4.3 / 14.12.2018

